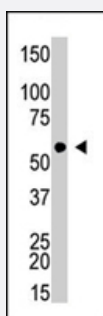


# FASTK polyclonal antibody

Catalog # PAB4642

Size 400 uL

## Applications



### Western Blot (Cell lysate)

The FASTK polyclonal antibody (Cat # PAB4642) is used in Western blot to detect FASTK in HL-60 cell lysate .

## Specification

|                            |  |
|----------------------------|--|
| <b>Product Description</b> | Rabbit polyclonal antibody raised against synthetic peptide of FASTK.  |
| <b>Immunogen</b>           | A synthetic peptide (conjugated with KLH) corresponding to C-terminus of human FASTK.                                  |
| <b>Host</b>                | Rabbit   |
| <b>Reactivity</b>          | Human, Mouse   |
| <b>Form</b>                | Liquid   |
| <b>Purification</b>        | Protein G purification   |
| <b>Recommend Usage</b>     | ELISA (1:1000)<br>Western Blot (1:100-500)<br>The optimal working dilution should be determined by the end user.       |
| <b>Storage Buffer</b>      | In PBS (0.09% sodium azide)  |
| <b>Storage Instruction</b> | Store at 4°C. For long term storage store at -20°C.<br>Aliquot to avoid repeated freezing and thawing.                 |
| <b>Note</b>                | This product contains sodium azide: a POISONOUS AND HAZARDOUS SUBSTANCE which should be handled by trained staff only. |

## Applications

- Western Blot (Cell lysate)

The FASTK polyclonal antibody (Cat # PAB4642) is used in Western blot to detect FASTK in HL-60 cell lysate .

- Enzyme-linked Immunoabsorbent Assay

## Gene Info — FASTK

**Entrez GeneID** [10922](#)

**Protein Accession#** [NP\\_006703](#)

**Gene Name** FASTK

**Gene Alias** FAST

**Gene Description** Fas-activated serine/threonine kinase

**Omim ID** [606965](#)

**Gene Ontology** [Hyperlink](#)

**Gene Summary** The protein encoded by this gene is a member of the serine/threonine protein kinase family. This kinase was shown to be activated rapidly during Fas-mediated apoptosis in Jurkat cells. In response to Fas receptor ligation, it phosphorylates TIA1, an apoptosis-promoting nuclear RNA-binding protein. The encoded protein is a strong inducer of lymphocyte apoptosis. Two transcript variants encoding different isoforms have been found for this gene. Other variants exist, but their full-length natures have not yet been determined. [provided by RefSeq]

**Other Designations** FAST kinase

## Disease

- [Attention Deficit Disorder with Hyperactivity](#)
- [Autistic Disorder](#)
- [Kidney Failure](#)
- [NARP](#)