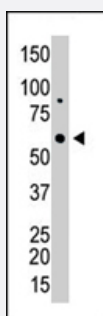


GALK2 polyclonal antibody

Catalog # PAB4639

Size 400 uL

Applications



Western Blot (Cell lysate)

The GALK2 polyclonal antibody (Cat # PAB4639) is used in Western blot to detect GALK2 in HL-60 cell lysate .

Specification

Product Description	Rabbit polyclonal antibody raised against synthetic peptide of GALK2.
Immunogen	A synthetic peptide (conjugated with KLH) corresponding to C-terminus of human GALK2.
Host	Rabbit
Reactivity	Human
Form	Liquid
Purification	Protein G purification
Recommend Usage	ELISA (1:1000) Western Blot (1:100-500) The optimal working dilution should be determined by the end user.
Storage Buffer	In PBS (0.09% sodium azide)
Storage Instruction	Store at 4°C. For long term storage store at -20°C. Aliquot to avoid repeated freezing and thawing.
Note	This product contains sodium azide: a POISONOUS AND HAZARDOUS SUBSTANCE which should be handled by trained staff only.

Applications

- Western Blot (Cell lysate)

The GALK2 polyclonal antibody (Cat # PAB4639) is used in Western blot to detect GALK2 in HL-60 cell lysate .

- Enzyme-linked Immunoabsorbent Assay

Gene Info — GALK2

Entrez GeneID	2585
Protein Accession#	Q01415
Gene Name	GALK2
Gene Alias	GK2, MGC1745
Gene Description	galactokinase 2
Omim ID	137028
Gene Ontology	Hyperlink
Gene Summary	This gene encodes a highly efficient N-acetylgalactosamine (GalNAc) kinase, which has galactokinase activity when galactose is present at high concentrations. Two alternatively spliced transcript variants encoding different isoforms have been found for this gene. [provided by RefSeq]
Other Designations	-

Pathway

- [Amino sugar and nucleotide sugar metabolism](#)
- [Galactose metabolism](#)
- [Metabolic pathways](#)