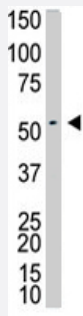


# GALK2 polyclonal antibody

Catalog # PAB4638

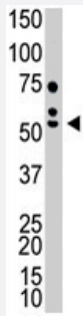
Size 400 uL

## Applications



### Western Blot (Tissue lysate)

The GALK2 polyclonal antibody (Cat # PAB4638) is used in Western blot to detect GALK2 in mouse intestine tissue lysate .



### Western Blot (Cell lysate)

The GALK2 polyclonal antibody (Cat # PAB4638) is used in Western blot to detect GALK2 in HL-60 cell lysate .

## Specification

<b>Product Description</b>	Rabbit polyclonal antibody raised against synthetic peptide of GALK2.
<b>Immunogen</b>	A synthetic peptide (conjugated with KLH) corresponding to N-terminus of human GALK2.
<b>Host</b>	Rabbit
<b>Reactivity</b>	Human
<b>Form</b>	Liquid
<b>Purification</b>	Protein G purification

<b>Recommend Usage</b>	ELISA (1:1000) Western Blot (1:100-500) The optimal working dilution should be determined by the end user.
<b>Storage Buffer</b>	In PBS (0.09% sodium azide)
<b>Storage Instruction</b>	Store at 4°C. For long term storage store at -20°C. Aliquot to avoid repeated freezing and thawing.
<b>Note</b>	This product contains sodium azide: a POISONOUS AND HAZARDOUS SUBSTANCE which should be handled by trained staff only.

## Applications

- Western Blot (Tissue lysate)

The GALK2 polyclonal antibody (Cat # PAB4638) is used in Western blot to detect GALK2 in mouse intestine tissue lysate .

- Western Blot (Cell lysate)

The GALK2 polyclonal antibody (Cat # PAB4638) is used in Western blot to detect GALK2 in HL-60 cell lysate .

- Enzyme-linked Immunoabsorbent Assay

## Gene Info — GALK2

<b>Entrez GeneID</b>	<a href="#">2585</a>
<b>Protein Accession#</b>	<a href="#">Q01415</a>
<b>Gene Name</b>	GALK2
<b>Gene Alias</b>	GK2, MGC1745
<b>Gene Description</b>	galactokinase 2
<b>Omim ID</b>	<a href="#">137028</a>
<b>Gene Ontology</b>	<a href="#">Hyperlink</a>
<b>Gene Summary</b>	This gene encodes a highly efficient N-acetylgalactosamine (GalNAc) kinase, which has galactokinase activity when galactose is present at high concentrations. Two alternatively spliced transcript variants encoding different isoforms have been found for this gene. [provided by RefSeq]
<b>Other Designations</b>	-

## Pathway

- [Amino sugar and nucleotide sugar metabolism](#)
- [Galactose metabolism](#)
- [Metabolic pathways](#)