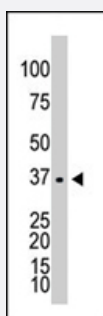


GALK1 polyclonal antibody

Catalog # PAB4637

Size 400 uL

Applications



Western Blot (Cell lysate)

The GALK1 polyclonal antibody (Cat # PAB4637) is used in Western blot to detect GALK1 in Y-79 cell lysate .

Specification

Product Description	Rabbit polyclonal antibody raised against synthetic peptide of GALK1.
Immunogen	A synthetic peptide (conjugated with KLH) corresponding to C-terminus of human GALK1.
Host	Rabbit
Reactivity	Human, Mouse
Form	Liquid
Purification	Protein G purification
Recommend Usage	ELISA (1:1000) Western Blot (1:100-500) The optimal working dilution should be determined by the end user.
Storage Buffer	In PBS (0.09% sodium azide)
Storage Instruction	Store at 4°C. For long term storage store at -20°C. Aliquot to avoid repeated freezing and thawing.
Note	This product contains sodium azide: a POISONOUS AND HAZARDOUS SUBSTANCE which should be handled by trained staff only.

Applications

- Western Blot (Cell lysate)

The GALK1 polyclonal antibody (Cat # PAB4637) is used in Western blot to detect GALK1 in Y-79 cell lysate .

- Enzyme-linked Immunoabsorbent Assay

Gene Info — GALK1

Entrez GeneID	2584
Protein Accession#	P51570
Gene Name	GALK1
Gene Alias	GALK, GK1
Gene Description	galactokinase 1
Omim ID	230200 604313
Gene Ontology	Hyperlink
Gene Summary	Galactokinase is a major enzyme for the metabolism of galactose and its deficiency causes congenital cataracts during infancy and presenile cataracts in the adult population. [provided by RefSeq]
Other Designations	-

Pathway

- [Amino sugar and nucleotide sugar metabolism](#)
- [Galactose metabolism](#)
- [Metabolic pathways](#)

Disease

- [Cardiovascular Diseases](#)

- [Cataract](#)
- [Diabetes Mellitus](#)
- [Edema](#)
- [Galactosemias](#)
- [Genetic Predisposition to Disease](#)