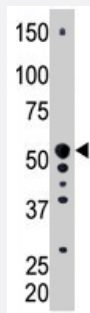


# PICK1 polyclonal antibody

Catalog # PAB4632

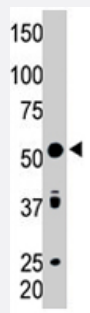
Size 400 uL

## Applications



### Western Blot (Tissue lysate)

The PICK1 polyclonal antibody (Cat # PAB4632) is used in Western blot to detect PICK1 in mouse pancreas tissue lysate .



### Western Blot (Cell lysate)

The PICK1 polyclonal antibody (Cat # PAB4632) is used in Western blot to detect PICK1 in HeLa cell lysate .

## Specification

<b>Product Description</b>	Rabbit polyclonal antibody raised against synthetic peptide of PICK1.
<b>Immunogen</b>	A synthetic peptide (conjugated with KLH) corresponding to C-terminus of human PICK1.
<b>Host</b>	Rabbit
<b>Reactivity</b>	Human, Mouse
<b>Form</b>	Liquid
<b>Purification</b>	Protein G purification

Recommend Usage	ELISA (1:1000) Western Blot (1:100-500) The optimal working dilution should be determined by the end user.
Storage Buffer	In PBS (0.09% sodium azide)
Storage Instruction	Store at 4°C. For long term storage store at -20°C. Aliquot to avoid repeated freezing and thawing.
Note	This product contains sodium azide: a POISONOUS AND HAZARDOUS SUBSTANCE which should be handled by trained staff only.

## Applications

- Western Blot (Tissue lysate)

The PICK1 polyclonal antibody (Cat # PAB4632) is used in Western blot to detect PICK1 in mouse pancreas tissue lysate .

- Western Blot (Cell lysate)

The PICK1 polyclonal antibody (Cat # PAB4632) is used in Western blot to detect PICK1 in HeLa cell lysate .

- Enzyme-linked Immunoabsorbent Assay

## Gene Info — PICK1

Entrez GeneID	<a href="#">9463</a>
Protein Accession#	<a href="#">Q9NRD5</a>
Gene Name	PICK1
Gene Alias	MGC15204, PICK, PRKCABP
Gene Description	protein interacting with PRKCA 1
Omim ID	<a href="#">605926</a>
Gene Ontology	<a href="#">Hyperlink</a>

**Gene Summary**

The protein encoded by this gene contains a PDZ domain, through which it interacts with protein kinase C, alpha (PRKCA). This protein may function as an adaptor that binds to and organizes the subcellular localization of a variety of membrane proteins. It has been shown to interact with multiple glutamate receptor subtypes, monoamine plasma membrane transporters, as well as non-voltage gated sodium channels, and may target PRKCA to these membrane proteins and thus regulate their distribution and function. This protein has also been found to act as an anchoring protein that specifically targets PRKCA to mitochondria in a ligand-specific manner. Three transcript variants encoding the same protein have been found for this gene. [provided by RefSeq]

**Other Designations**

OTTHUMP00000028509|PRKCA-binding protein|protein interacting with C kinase 1|protein kinase C, alpha binding protein

**Disease**

- [Amphetamine-Related Disorders](#)
- [Genetic Predisposition to Disease](#)
- [Mental Disorders](#)
- [Psychoses](#)
- [Schizophrenia](#)