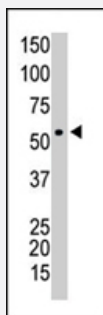


PICK1 polyclonal antibody

Catalog # PAB4631

Size 400 uL

Applications



Western Blot (Cell lysate)

The PICK1 polyclonal antibody (Cat # PAB4631) is used in Western blot to detect PICK1 in Y-79 cell lysate .

Specification

Product Description	Rabbit polyclonal antibody raised against synthetic peptide of PICK1.
Immunogen	A synthetic peptide (conjugated with KLH) corresponding to N-terminus of human PICK1.
Host	Rabbit
Reactivity	Human, Mouse
Form	Liquid
Purification	Protein G purification
Recommend Usage	ELISA (1:1000) Western Blot (1:100-500) The optimal working dilution should be determined by the end user.
Storage Buffer	In PBS (0.09% sodium azide)
Storage Instruction	Store at 4°C. For long term storage store at -20°C. Aliquot to avoid repeated freezing and thawing.
Note	This product contains sodium azide: a POISONOUS AND HAZARDOUS SUBSTANCE which should be handled by trained staff only.

Applications

- Western Blot (Cell lysate)

The PICK1 polyclonal antibody (Cat # PAB4631) is used in Western blot to detect PICK1 in Y-79 cell lysate .

- Enzyme-linked Immunoabsorbent Assay

Gene Info — PICK1

Entrez GeneID [9463](#)

Protein Accession# [Q9NRD5](#)

Gene Name PICK1

Gene Alias MGC15204, PICK, PRKCABP

Gene Description protein interacting with PRKCA 1

Omim ID [605926](#)

Gene Ontology [Hyperlink](#)

Gene Summary

The protein encoded by this gene contains a PDZ domain, through which it interacts with protein kinase C, alpha (PRKCA). This protein may function as an adaptor that binds to and organizes the subcellular localization of a variety of membrane proteins. It has been shown to interact with multiple glutamate receptor subtypes, monoamine plasma membrane transporters, as well as non-voltage gated sodium channels, and may target PRKCA to these membrane proteins and thus regulate their distribution and function. This protein has also been found to act as an anchoring protein that specifically targets PRKCA to mitochondria in a ligand-specific manner. Three transcript variants encoding the same protein have been found for this gene. [provided by RefSeq]

Other Designations

OTTHUMP00000028509|PRKCA-binding protein|protein interacting with C kinase 1|protein kinase C, alpha binding protein

Disease

- [Amphetamine-Related Disorders](#)
- [Genetic Predisposition to Disease](#)
- [Mental Disorders](#)

- [Psychoses](#)
- [Schizophrenia](#)