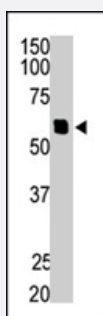


# ILK-2 polyclonal antibody

Catalog # PAB4628

Size 400 uL

## Applications



### Western Blot (Cell lysate)

The ILK-2 polyclonal antibody (Cat # PAB4628) is used in Western blot to detect ILK-2 in Y-79 cell lysate .

## Specification

<b>Product Description</b>	Rabbit polyclonal antibody raised against synthetic peptide of ILK-2.
<b>Immunogen</b>	A synthetic peptide (conjugated with KLH) corresponding to C-terminus of human ILK-2.
<b>Host</b>	Rabbit
<b>Reactivity</b>	Human, Mouse
<b>Form</b>	Liquid
<b>Purification</b>	Protein G purification
<b>Recommend Usage</b>	ELISA (1:1000) Western Blot (1:100-500) The optimal working dilution should be determined by the end user.
<b>Storage Buffer</b>	In PBS (0.09% sodium azide)
<b>Storage Instruction</b>	Store at 4°C. For long term storage store at -20°C. Aliquot to avoid repeated freezing and thawing.
<b>Note</b>	This product contains sodium azide: a POISONOUS AND HAZARDOUS SUBSTANCE which should be handled by trained staff only.

## Applications

- Western Blot (Cell lysate)

The ILK-2 polyclonal antibody (Cat # PAB4628) is used in Western blot to detect ILK-2 in Y-79 cell lysate .

- Enzyme-linked Immunoabsorbent Assay

## Gene Info — ILK-2

Entrez GeneID	<a href="#">55522</a>
---------------	-----------------------

Protein Accession#	<a href="#">P57043</a>
--------------------	------------------------

Gene Name	ILK-2
-----------	-------

Gene Alias	-
------------	---

Gene Description	integrin-linked kinase-2
------------------	--------------------------

Gene Ontology	<a href="#">Hyperlink</a>
---------------	---------------------------

Other Designations	-
--------------------	---