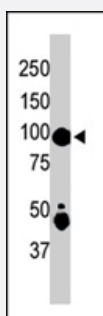


MAP4K2 polyclonal antibody

Catalog # PAB4603

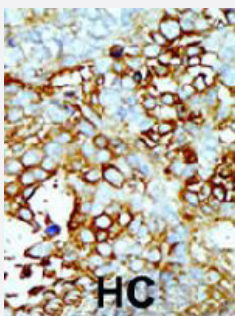
Size 400 uL

Applications



Western Blot (Tissue lysate)

The MAP4K2 polyclonal antibody (Cat # PAB4603) is used in Western blot to detect MAP4K2 in mouse skeletal muscle tissue lysate .



Immunohistochemistry (Formalin/PFA-fixed paraffin-embedded sections)

Formalin-fixed and paraffin-embedded human hepatocellular carcinoma tissue reacted with MAP4K2 polyclonal antibody (Cat # PAB4603) , which was peroxidase-conjugated to the secondary antibody, followed by AEC staining . This data demonstrates the use of this antibody for immunohistochemistry; clinical relevance has not been evaluated . HC = hepatocarcinoma .

Specification

Product Description	Rabbit polyclonal antibody raised against synthetic peptide of MAP4K2.
Immunogen	A synthetic peptide (conjugated with KLH) corresponding to internal region of human MAP4K2.
Host	Rabbit
Reactivity	Human, Mouse
Form	Liquid
Purification	Protein G purification

Recommend Usage	ELISA (1:1000) Western Blot (1:100-500) Immunohistochemistry (1:50-100) The optimal working dilution should be determined by the end user.
Storage Buffer	In PBS (0.09% sodium azide)
Storage Instruction	Store at 4°C. For long term storage store at -20°C. Aliquot to avoid repeated freezing and thawing.
Note	This product contains sodium azide: a POISONOUS AND HAZARDOUS SUBSTANCE which should be handled by trained staff only.

Applications

- Western Blot (Tissue lysate)

The MAP4K2 polyclonal antibody (Cat # PAB4603) is used in Western blot to detect MAP4K2 in mouse skeletal muscle tissue lysate .

- Immunohistochemistry (Formalin/PFA-fixed paraffin-embedded sections)

Formalin-fixed and paraffin-embedded human hepatocellular carcinoma tissue reacted with MAP4K2 polyclonal antibody (Cat # PAB4603) , which was peroxidase-conjugated to the secondary antibody, followed by AEC staining . This data demonstrates the use of this antibody for immunohistochemistry; clinical relevance has not been evaluated . HC = hepatocarcinoma .

- Enzyme-linked Immunoabsorbent Assay

Gene Info — MAP4K2

Entrez GeneID	5871
Protein Accession#	M4K2_HUMAN
Gene Name	MAP4K2
Gene Alias	BL44, GCK, RAB8IP
Gene Description	mitogen-activated protein kinase kinase kinase kinase 2
Omim ID	603166
Gene Ontology	Hyperlink

Gene Summary

The protein encoded by this gene is a member of the serine/threonine protein kinase family. Although this kinase is found in many tissues, its expression in lymphoid follicles is restricted to the cells of germinal centre, where it may participate in B-cell differentiation. This kinase can be activated by TNF-alpha, and has been shown to specifically activate MAP kinases. This kinase is also found to interact with TNF receptor-associated factor 2 (TRAF2), which is involved in the activation of MAP3K1/MEKK1. [provided by RefSeq]

Other Designations

B lymphocyte serine/threonine protein kinase|Rab8 interacting protein|germinal centre kinase (G C kinase)

Publication Reference

- [Direct activation of mitogen-activated protein kinase kinase kinase MEKK1 by the Ste20p homologue GCK and the adapter protein TRAF2.](#)

Chadee DN, Yuasa T, Kyriakis JM.

Molecular and Cellular Biology 2002 Feb; 22(3):737.

Application: IP, WB, Human, RAMOS cells

- [Differential expression of a novel protein kinase in human B lymphocytes. Preferential localization in the germinal center.](#)

Katz P, Whalen G, Kehrl JH.

The Journal of Biological Chemistry 1994 Jun; 269(24):16802.

Application: WB-Ce, WB-Ti, Human, Human B Lymphocytes

Pathway

- [MAPK signaling pathway](#)

Disease

- [Cardiovascular Diseases](#)
- [Diabetes Mellitus](#)
- [Edema](#)