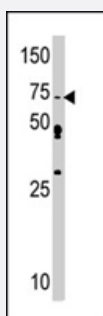


# SRPK1 polyclonal antibody

Catalog # PAB4560

Size 400 uL

## Applications



### Western Blot (Tissue lysate)

Western blot analysis of SRPK1 polyclonal antibody (Cat # PAB4560) in mouse brain tissue lysate (35 ug/lane). SRPK1 (arrow) was detected using the purified SRPK1 polyclonal antibody (Cat # PAB4560) (1 : 60 dilution).

## Specification

<b>Product Description</b>	Rabbit polyclonal antibody raised against synthetic peptide of SRPK1.
<b>Immunogen</b>	A synthetic peptide (conjugated with KLH) corresponding to N-terminus of human SRPK1.
<b>Host</b>	Rabbit
<b>Reactivity</b>	Human
<b>Form</b>	Liquid
<b>Purification</b>	Protein G purification
<b>Recommend Usage</b>	ELISA (1:1000) Western Blot (1:100-500) The optimal working dilution should be determined by the end user.
<b>Storage Buffer</b>	In PBS (0.09% sodium azide)
<b>Storage Instruction</b>	Store at 4°C. For long term storage store at -20°C. Aliquot to avoid repeated freezing and thawing.
<b>Note</b>	This product contains sodium azide: a POISONOUS AND HAZARDOUS SUBSTANCE which should be handled by trained staff only.

## Applications

- Western Blot (Tissue lysate)

Western blot analysis of SRPK1 polyclonal antibody (Cat # PAB4560) in mouse brain tissue lysate (35 ug/lane). SRPK1 (arrow) was detected using the purified SRPK1 polyclonal antibody (Cat # PAB4560) (1 : 60 dilution).

- Enzyme-linked Immunoabsorbent Assay

## Gene Info — SRPK1

Entrez GeneID [6732](#)

Protein Accession# [NP\\_003128:Q5R363](#)

Gene Name SRPK1

Gene Alias SFRSK1

Gene Description SFRS protein kinase 1

Omim ID [601939](#)

Gene Ontology [Hyperlink](#)

**Gene Summary** This gene encodes a serine/arginine protein kinase specific for the SR (serine/arginine-rich domain) family of splicing factors. The protein localizes to the nucleus and the cytoplasm. It is thought to play a role in regulation of both constitutive and alternative splicing by regulating intracellular localization of splicing factors. A second alternatively spliced transcript variant for this gene has been described, but its full length nature has not been determined. [provided by RefSeq]

**Other Designations** SR protein kinase 1

## Publication Reference

- [Identification of SRPK1 and SRPK2 as the major cellular protein kinases phosphorylating hepatitis B virus core protein.](#)

Daub H, Blencke S, Habenberger P, Kurtenbach A, Dennenmoser J, Wissing J, Ullrich A, Cotten M.

Journal of Virology 2002 Aug; 76(16):8124.

Application: WB-Ce, WB-Tr, Human, Monkey, COS-7, HuH-7 cells

- [Cloning and characterization of an alternatively spliced form of SR protein kinase 1 that interacts specifically with scaffold attachment factor-B.](#)

Nikolakaki E, Kohen R, Hartmann AM, Stamm S, Georgatsou E, Giannakouros T.

The Journal of Biological Chemistry 2001 Oct; 276(43):40175.

Application: IP, WB-Tr, Human, Rat, HEK 293T cells, Rat testis

- [Localization of serine kinases, SRPK1 \(SFRSK1\) and SRPK2 \(SFRSK2\), specific for the SR family of splicing factors in mouse and human chromosomes.](#)

Wang HY, Arden KC, Bermingham JR Jr, Viars CS, Lin W, Boyer AD, Fu XD.

Genomics 1999 Apr; 57(2):310.

## Disease

- [Tobacco Use Disorder](#)