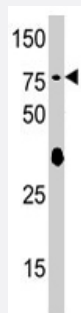


# SCYL2 polyclonal antibody

Catalog # PAB4543

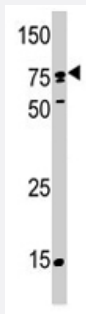
Size 400 uL

## Applications



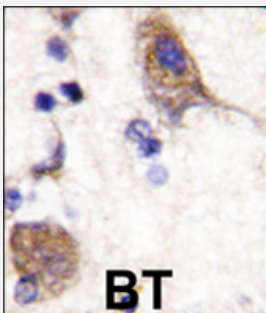
### Western Blot (Tissue lysate)

Western blot analysis of SCYL2 polyclonal antibody (Cat # PAB4543) in mouse brain tissue lysates (35 ug/lane). SCYL2 (arrow) was detected using the purified SCYL2 polyclonal antibody (Cat # PAB4543) (1 : 60 dilution).



### Western Blot (Cell lysate)

Western blot analysis of SCYL2 polyclonal antibody (Cat # PAB4543) in T-47D . SCYL2 (arrow) was detected using the purified SCYL2 polyclonal antibody (Cat # PAB4543) (1 : 60 dilution) .



### Immunohistochemistry (Formalin/PFA-fixed paraffin-embedded sections)

Formalin-fixed and paraffin-embedded human brain tissue reacted with SCYL2 polyclonal antibody (Cat # PAB4543) , which was peroxidase-conjugated to the secondary antibody, followed by DAB staining . This data demonstrates the use of this antibody for immunohistochemistry; clinical relevance has not been evaluated .

## Specification

### Product Description

Rabbit polyclonal antibody raised against synthetic peptide of SCYL2.

### Immunogen

A synthetic peptide (conjugated with KLH) corresponding to C-terminus of human SCYL2.

Host	Rabbit
Reactivity	Human, Mouse
Form	Liquid
Purification	Protein G purification
Recommend Usage	ELISA (1:1000) Western Blot (1:100-500) Immunohistochemistry (1:10-50) The optimal working dilution should be determined by the end user.
Storage Buffer	In PBS (0.09% sodium azide)
Storage Instruction	Store at 4°C. For long term storage store at -20°C. Aliquot to avoid repeated freezing and thawing.
Note	This product contains sodium azide: a POISONOUS AND HAZARDOUS SUBSTANCE which should be handled by trained staff only.

## Applications

- Western Blot (Tissue lysate)

Western blot analysis of SCYL2 polyclonal antibody (Cat # PAB4543) in mouse brain tissue lysates (35 ug/lane). SCYL2 (arrow) was detected using the purified SCYL2 polyclonal antibody (Cat # PAB4543) (1 : 60 dilution).

- Western Blot (Cell lysate)

Western blot analysis of SCYL2 polyclonal antibody (Cat # PAB4543) in T-47D . SCYL2 (arrow) was detected using the purified SCYL2 polyclonal antibody (Cat # PAB4543) (1 : 60 dilution) .

- Immunohistochemistry (Formalin/PFA-fixed paraffin-embedded sections)

Formalin-fixed and paraffin-embedded human brain tissue reacted with SCYL2 polyclonal antibody (Cat # PAB4543) , which was peroxidase-conjugated to the secondary antibody, followed by DAB staining . This data demonstrates the use of this antibody for immunohistochemistry; clinical relevance has not been evaluated .

- Enzyme-linked Immunoabsorbent Assay

## Gene Info — SCYL2

Entrez GeneID [55681](#)

Protein Accession# [NP\\_060458;Q6P3W7](#)

Gene Name	SCYL2
Gene Alias	CVAK104, FLJ10074, KIAA1360
Gene Description	SCY1-like 2 (S. cerevisiae)
Gene Ontology	<a href="#">Hyperlink</a>
Other Designations	SCY1-like 2 protein coated vesicle-associated kinase of 104 kDa

## Publication Reference

- [Complete sequencing and characterization of 21,243 full-length human cDNAs.](#)

Ota T, Suzuki Y, Nishikawa T, Otsuki T, Sugiyama T, Irie R, Wakamatsu A, Hayashi K, Sato H, Nagai K, Kimura K, Makita H, Sekine M, Obayashi M, Nishi T, Shibahara T, Tanaka T, Ishii S, Yamamoto J, Saito K, Kawai Y, Isono Y, Nakamura Y, Nagahari K, Murakami K, Yasuda T, Iwayanagi T, Wagatsuma M, Shiratori A, Sudo H, Hosoiri T, Kaku Y, Kodaira H, Kondo H, Sugawara M, Takahashi M, Kanda K, Yokoi T, Furuya T, Kikkawa E, Omura Y, Abe K, Kamihara K, Katsuta N, Sato K, Tanikawa M, Yamazaki M, Ninomiya K

Nature Genetics 2003 Dec; 36(1):40.