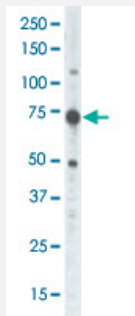


# RPS6KA4 polyclonal antibody

Catalog # PAB4524

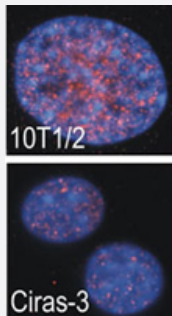
Size 400 uL

## Applications



### Western Blot (Tissue lysate)

The RPS6KA4 polyclonal antibody (Cat # PAB4524) is used in Western blot to detect RPS6KA4 in placenta tissue lysate .



### Immunofluorescence

Indirect immunofluorescence analysis showed that RPS6KA4 is predominantly localized in the nucleus of parental (10T1/2) and oncogene-transformed (Ciras-3) mouse fibroblasts . Cells were co-stained with DAPI to visualize nucleus compartment . Data is kindly provided by B . Drobic and Dr . J . Davie from University of Manitoba (Winnipeg, Canada) .

## Specification

<b>Product Description</b>	Rabbit polyclonal antibody raised against synthetic peptide of RPS6KA4.
<b>Immunogen</b>	A synthetic peptide (conjugated with KLH) corresponding to C-terminus of human RPS6KA4.
<b>Host</b>	Rabbit
<b>Reactivity</b>	Human, Mouse
<b>Form</b>	Liquid
<b>Purification</b>	Protein G purification

<b>Recommend Usage</b>	ELISA (1:1000) Western Blot (1:100-500) Immunofluorescence (1:100-500) The optimal working dilution should be determined by the end user.
<b>Storage Buffer</b>	In PBS (0.09% sodium azide)
<b>Storage Instruction</b>	Store at 4°C. For long term storage store at -20°C. Aliquot to avoid repeated freezing and thawing.
<b>Note</b>	This product contains sodium azide: a POISONOUS AND HAZARDOUS SUBSTANCE which should be handled by trained staff only.

## Applications

- Western Blot (Tissue lysate)

The RPS6KA4 polyclonal antibody (Cat # PAB4524) is used in Western blot to detect RPS6KA4 in placenta tissue lysate .

- Immunofluorescence

Indirect immunofluorescence analysis showed that RPS6KA4 is predominantly localized in the nucleus of parental (10T1/2) and oncogene-transformed (Ciras-3) mouse fibroblasts . Cells were co-stained with DAPI to visualize nucleus compartment . Data is kindly provided by B . Drobic and Dr . J . Davie from University of Manitoba (Winnipeg, Canada) .

- Enzyme-linked Immunoabsorbent Assay

## Gene Info — RPS6KA4

<b>Entrez GeneID</b>	<a href="#">8986</a>
<b>Protein Accession#</b>	<a href="#">O75585</a>
<b>Gene Name</b>	RPS6KA4
<b>Gene Alias</b>	MSK2, RSK-B
<b>Gene Description</b>	ribosomal protein S6 kinase, 90kDa, polypeptide 4
<b>Omim ID</b>	<a href="#">603606</a>
<b>Gene Ontology</b>	<a href="#">Hyperlink</a>
<b>Gene Summary</b>	This gene encodes a member of the RSK (ribosomal S6 kinase) family of serine/threonine kinase s. This kinase contains 2 non-identical kinase catalytic domains and phosphorylates various substrates, including CREB1 and c-fos. Alternate transcriptional splice variants of this gene have been observed but have not been thoroughly characterized. [provided by RefSeq]

**Other Designations**

mitogen- and stress-activated protein kinase 2|ribosomal protein S6 kinase alpha 4|ribosomal protein S6 kinase, 90kD, polypeptide 4|ribosomal protein kinase B

**Publication Reference**

- [Dynamic changes in histone H3 phosphoacetylation during early embryonic stem cell differentiation are directly mediated by mitogen- and stress-activated protein kinase 1 via activation of MAPK pathways.](#)

Lee ER, McCool KW, Murdoch FE, Fritsch MK.

The Journal of Biological Chemistry 2006 May; 281(30):21162.

**Pathway**

- [MAPK signaling pathway](#)
- [Neurotrophin signaling pathway](#)