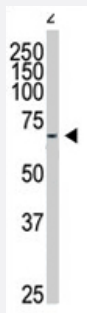


# GRK6 polyclonal antibody

Catalog # PAB4520

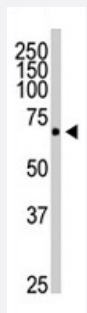
Size 400 uL

## Applications



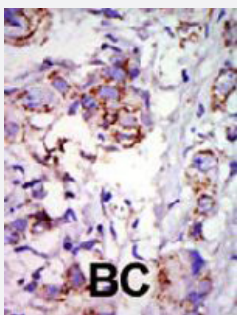
### Western Blot (Tissue lysate)

Western blot analysis of GRK6 polyclonal antibody (Cat # PAB4520) in mouse heart tissue lysate . GRK6 (arrow) was detected using purified GRK6 polyclonal antibody (Cat # PAB4520) . Secondary HRP-anti-rabbit was used for signal visualization with chemiluminescence .



### Western Blot (Cell lysate)

Western blot analysis of GRK6 polyclonal antibody (Cat # PAB4520) in HeLa cell lysate . GRK6 (arrow) was detected using purified GRK6 polyclonal antibody (Cat # PAB4520) . Secondary HRP-anti-rabbit was used for signal visualization with chemiluminescence .



### Immunohistochemistry (Formalin/PFA-fixed paraffin-embedded sections)

Formalin-fixed and paraffin-embedded human cancer tissue reacted with GRK6 polyclonal antibody (Cat # PAB4520) , which was peroxidase-conjugated to the secondary antibody, followed by DAB staining . This data demonstrates the use of this antibody for immunohistochemistry; clinical relevance has not been evaluated . BC = breast carcinoma .

## Specification

### Product Description

Rabbit polyclonal antibody raised against synthetic peptide of GRK6.

### Immunogen

A synthetic peptide (conjugated with KLH) corresponding to C-terminus of human GRK6.

Host	Rabbit
Reactivity	Human, Mouse
Form	Liquid
Purification	Protein G purification
Recommend Usage	ELISA (1:1000) Western Blot (1:100-500) Immunohistochemistry (1:50-100) The optimal working dilution should be determined by the end user.
Storage Buffer	In PBS (0.09% sodium azide)
Storage Instruction	Store at 4°C. For long term storage store at -20°C. Aliquot to avoid repeated freezing and thawing.
Note	This product contains sodium azide: a POISONOUS AND HAZARDOUS SUBSTANCE which should be handled by trained staff only.

## Applications

- Western Blot (Tissue lysate)

Western blot analysis of GRK6 polyclonal antibody (Cat # PAB4520) in mouse heart tissue lysate . GRK6 (arrow) was detected using purified GRK6 polyclonal antibody (Cat # PAB4520) . Secondary HRP-anti-rabbit was used for signal visualization with chemiluminescence .

- Western Blot (Cell lysate)

Western blot analysis of GRK6 polyclonal antibody (Cat # PAB4520) in HeLa cell lysate . GRK6 (arrow) was detected using purified GRK6 polyclonal antibody (Cat # PAB4520) . Secondary HRP-anti-rabbit was used for signal visualization with chemiluminescence .

- Immunohistochemistry (Formalin/PFA-fixed paraffin-embedded sections)

Formalin-fixed and paraffin-embedded human cancer tissue reacted with GRK6 polyclonal antibody (Cat # PAB4520) , which was peroxidase-conjugated to the secondary antibody, followed by DAB staining . This data demonstrates the use of this antibody for immunohistochemistry; clinical relevance has not been evaluated . BC = breast carcinoma .

- Enzyme-linked Immunoabsorbent Assay

## Gene Info — GRK6

Entrez GeneID

[2870](#)

Protein Accession#	<a href="#">P43250</a>
Gene Name	GRK6
Gene Alias	FLJ32135, GPRK6
Gene Description	G protein-coupled receptor kinase 6
Omim ID	<a href="#">600869</a>
Gene Ontology	<a href="#">Hyperlink</a>
Gene Summary	This gene encodes a member of the guanine nucleotide-binding protein (G protein)-coupled receptor kinase subfamily of the Ser/Thr protein kinase family. The protein phosphorylates the activated forms of G protein-coupled receptors thus initiating their deactivation. Several transcript variants encoding different isoforms have been described for this gene. [provided by RefSeq]
Other Designations	-

## Publication Reference

- [Generation and initial analysis of more than 15,000 full-length human and mouse cDNA sequences.](#)

Strausberg RL, Feingold EA, Grouse LH, Derge JG, Klausner RD, Collins FS, Wagner L, Shenmen CM, Schuler GD, Altschul SF, Zeeberg B, Buetow KH, Schaefer CF, Bhat NK, Hopkins RF, Jordan H, Moore T, Max SI, Wang J, Hsieh F, Diatchenko L, Marusina K, Farmer AA, Rubin GM, Hong L, Stapleton M, Soares MB, Bonaldo MF, Casavant TL, Scheetz TE, Brownstein MJ, Ustin TB, Toshiyuki S, Caminci P, Prange C, Raha SS, Loquellano NA, Peters GJ, Abramson RD, Mullahy SJ, Bosak SA, McEwan PJ, McKernan KJ, Malek JA,

PNAS 2002 Dec; 99(26):16899.

- [Palmitoylation of G protein-coupled receptor kinase, GRK6. Lipid modification diversity in the GRK family.](#)

Stoffel RH, Randall RR, Premont RT, Lefkowitz RJ, Inglese J.

The Journal of Biological Chemistry 1994 Nov; 269(45):27791.

Application: IP, Insect, COS-7 cells, Sf9 cells, Recombinant proteins

- [Molecular cloning and expression of GRK6. A new member of the G protein-coupled receptor kinase family.](#)

Benovic JL, Gomez J.

The Journal of Biological Chemistry 1993 Sep; 268(26):19521.

## Pathway

- [Chemokine signaling pathway](#)

- [Endocytosis](#)

## Disease

- [Anorexia Nervosa](#)
- [Bulimia](#)
- [Cardiovascular Diseases](#)
- [Diabetes Mellitus](#)
- [Edema](#)
- [Genetic Predisposition to Disease](#)
- [Hyperparathyroidism](#)