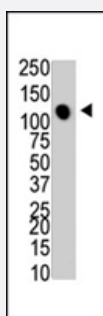


# MTMR4 polyclonal antibody

Catalog # PAB4501

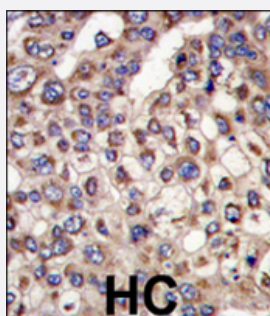
Size 400 uL

## Applications



### Western Blot (Tissue lysate)

The MTMR4 polyclonal antibody (Cat # PAB4501) is used in Western blot to detect MTMR4 in mouse heart tissue lysate .



### Immunohistochemistry (Formalin/PFA-fixed paraffin-embedded sections)

Formalin-fixed and paraffin-embedded human hepatocellular carcinoma reacted with MTMR4 polyclonal antibody (Cat # PAB4501) , which was peroxidase-conjugated to the secondary antibody, followed by DAB staining . This data demonstrates the use of this antibody for immunohistochemistry; clinical relevance has not been evaluated .

## Specification

Product Description	Rabbit polyclonal antibody raised against synthetic peptide of MTMR4.
Immunogen	A synthetic peptide (conjugated with KLH) corresponding to C-terminus of human MTMR4.
Host	Rabbit
Reactivity	Human, Mouse
Form	Liquid
Purification	Protein G purification

<b>Recommend Usage</b>	ELISA (1:1000) Western Blot (1:100-500) Immunohistochemistry (1:10-50) The optimal working dilution should be determined by the end user.
<b>Storage Buffer</b>	In PBS (0.09% sodium azide)
<b>Storage Instruction</b>	Store at 4°C. For long term storage store at -20°C. Aliquot to avoid repeated freezing and thawing.
<b>Note</b>	This product contains sodium azide: a POISONOUS AND HAZARDOUS SUBSTANCE which should be handled by trained staff only.

## Applications

- Western Blot (Tissue lysate)

The MTMR4 polyclonal antibody (Cat # PAB4501) is used in Western blot to detect MTMR4 in mouse heart tissue lysate .

- Immunohistochemistry (Formalin/PFA-fixed paraffin-embedded sections)

Formalin-fixed and paraffin-embedded human hepatocellular carcinoma reacted with MTMR4 polyclonal antibody (Cat # PAB4501) , which was peroxidase-conjugated to the secondary antibody, followed by DAB staining . This data demonstrates the use of this antibody for immunohistochemistry; clinical relevance has not been evaluated .

- Enzyme-linked Immunoabsorbent Assay

## Gene Info — MTMR4

<b>Entrez GeneID</b>	<a href="#">9110</a>
<b>Protein Accession#</b>	<a href="#">NM_004687</a>
<b>Gene Name</b>	MTMR4
<b>Gene Alias</b>	FYVE-DSP2, KIAA0647, ZFYVE11
<b>Gene Description</b>	myotubularin related protein 4
<b>Omim ID</b>	<a href="#">603559</a>
<b>Gene Ontology</b>	<a href="#">Hyperlink</a>
<b>Gene Summary</b>	FYVE domain containing 11
<b>Other Designations</b>	zinc finger, FYVE domain containing 11