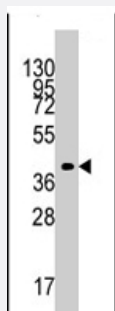


TBRG1 polyclonal antibody

Catalog # PAB4473

Size 400 uL

Applications



Western Blot (Tissue lysate)

Western blot analysis of TBRG1 polyclonal antibody (Cat # PAB4473) in mouse kidney tissue lysates (35 ug/lane). TBRG1 (arrow) was detected using the purified TBRG1 polyclonal antibody (Cat # PAB4473) (1 : 60 dilution).

Specification

Product Description	Rabbit polyclonal antibody raised against synthetic peptide of TBRG1.
Immunogen	A synthetic peptide (conjugated with KLH) corresponding to N-terminus of human TBRG1.
Host	Rabbit
Reactivity	Human
Form	Liquid
Purification	Ammonium sulfate precipitation
Recommend Usage	ELISA (1:1000) Western Blot (1:50-100) The optimal working dilution should be determined by the end user.
Storage Buffer	In PBS (0.09% sodium azide)
Storage Instruction	Store at 4°C. For long term storage store at -20°C. Aliquot to avoid repeated freezing and thawing.
Note	This product contains sodium azide: a POISONOUS AND HAZARDOUS SUBSTANCE which should be handled by trained staff only.

Applications

- Western Blot (Tissue lysate)

Western blot analysis of TBRG1 polyclonal antibody (Cat # PAB4473) in mouse kidney tissue lysates (35 ug/lane). TBRG1 (arrow) was detected using the purified TBRG1 polyclonal antibody (Cat # PAB4473) (1 : 60 dilution).

- Enzyme-linked Immunoabsorbent Assay

Gene Info — TBRG1

Entrez GeneID [84897](#)

Protein Accession# [NP_116200:Q3YBR2](#)

Gene Name TBRG1

Gene Alias FLJ14621, FLJ25020, FLJ90113, MGC129890, NIAM, TB-5

Gene Description transforming growth factor beta regulator 1

Omim ID [610614](#)

Gene Ontology [Hyperlink](#)

Other Designations nuclear interactor of ARF and MDM2

Publication Reference

- [Rapid eye movement sleep behavior disorder in parkinsonism with parkin mutations.](#)

Kumru H, Santamaria J, Tolosa E, Valdeoriola F, Munoz E, Marti MJ, Iranzo A.

Annals of Neurology 2004 Oct; 56(4):599.

- [Modulation of gene expression in the preimplantation mouse embryo by TGF-alpha and TGF-beta.](#)

Babalola GO, Schultz RM.

Molecular Reproduction and Development 1995 Jun; 41(2):133.

Application: WB-Ce, WB-Ti, Mouse, Mouse blastocysts, Mouse tissues