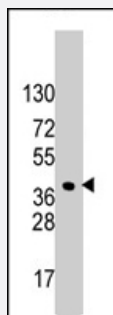


HDGF polyclonal antibody

Catalog # PAB4472

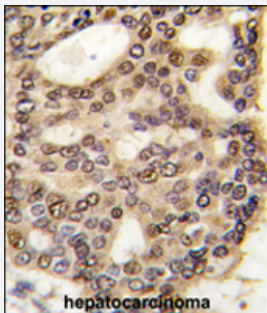
Size 400 uL

Applications



Western Blot (Cell lysate)

Western blot analysis of HDGF polyclonal antibody (Cat # PAB4472) in HeLa cell line lysates (35 ug/lane). HDGF (arrow) was detected using the purified HDGF polyclonal antibody (Cat # PAB4472) (1 : 60 dilution).



Immunohistochemistry (Formalin/PFA-fixed paraffin-embedded sections)

Formalin-fixed and paraffin-embedded human hepatocellular carcinoma reacted with HDGF polyclonal antibody (Cat # PAB4472) , which was peroxidase-conjugated to the secondary antibody, followed by DAB staining . This data demonstrates the use of this antibody for immunohistochemistry; clinical relevance has not been evaluated .

Specification

Product Description	Rabbit polyclonal antibody raised against synthetic peptide of HDGF.
Immunogen	A synthetic peptide (conjugated with KLH) corresponding to C-terminus of human HDGF.
Host	Rabbit
Reactivity	Human
Form	Liquid
Purification	Ammonium sulfate precipitation

Recommend Usage	ELISA (1:1000) Western Blot (1:50-100) Immunohistochemistry (1:10-50) The optimal working dilution should be determined by the end user.
Storage Buffer	In PBS (0.09% sodium azide)
Storage Instruction	Store at 4°C. For long term storage store at -20°C. Aliquot to avoid repeated freezing and thawing.
Note	This product contains sodium azide: a POISONOUS AND HAZARDOUS SUBSTANCE which should be handled by trained staff only.

Applications

- Western Blot (Cell lysate)

Western blot analysis of HDGF polyclonal antibody (Cat # PAB4472) in HeLa cell line lysates (35 ug/lane). HDGF (arrow) was detected using the purified HDGF polyclonal antibody (Cat # PAB4472) (1 : 60 dilution).

- Immunohistochemistry (Formalin/PFA-fixed paraffin-embedded sections)

Formalin-fixed and paraffin-embedded human hepatocellular carcinoma reacted with HDGF polyclonal antibody (Cat # PAB4472) , which was peroxidase-conjugated to the secondary antibody, followed by DAB staining . This data demonstrates the use of this antibody for immunohistochemistry; clinical relevance has not been evaluated .

- Enzyme-linked Immunoabsorbent Assay

Gene Info — HDGF

Entrez GeneID	3068
Protein Accession#	NP_004485;P51858
Gene Name	HDGF
Gene Alias	DKFZp686J1764, FLJ96580, HMG1L2
Gene Description	hepatoma-derived growth factor (high-mobility group protein 1-like)
Omim ID	600339
Gene Ontology	Hyperlink

Gene Summary

This gene encodes a member of the hepatoma-derived growth factor family. The encoded protein has mitogenic and DNA-binding activity and may play a role in cellular proliferation and differentiation. This gene was thought initially to be located on chromosome X, however, that location has been determined to correspond to a related pseudogene. Alternatively spliced transcript variants encoding distinct isoforms have been described. [provided by RefSeq]

Other Designations

OTTHUMP00000038721|hepatoma-derived growth factor

Publication Reference

- [SUMOylation of the hepatoma-derived growth factor negatively influences its binding to chromatin.](#)

Thakar K, Niedenthal R, Okaz E, Franken S, Jakobs A, Gupta S, Kelm S, Dietz F.

FEBS Letters 2008 Apr; 275(7):1411.

Application: IF, WB-Tr, Monkey, COS-7 cells

- [Hepatoma-derived growth factor is a novel prognostic factor for gastrointestinal stromal tumors.](#)

Chang KC, Tai MH, Lin JW, Wang CC, Huang CC, Hung CH, Chen CH, Lu SN, Lee CM, Changchien CS, Hu TH.

International Journal of Cancer 2007 Sep; 121(5):1059.

Application: IHC-P, Human, Human gastrointestinal stromal tumors

- [Expression level of hepatoma-derived growth factor correlates with tumor recurrence of esophageal carcinoma.](#)

Yamamoto S, Tomita Y, Hoshida Y, Morii E, Yasuda T, Doki Y, Aozasa K, Uyama H, Nakamura H, Monden M.

Annals of Surgical Oncology 2007 Jul; 14(7):2141.

Application: IHC-P, Human, Human esophageal carcinoma