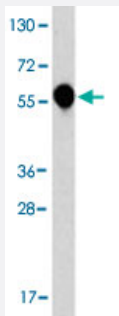


# IL1RL2 polyclonal antibody

Catalog # PAB4455

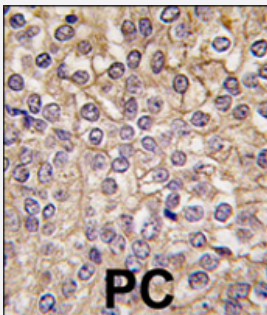
Size 400 uL

## Applications



### Western Blot (Cell lysate)

Western blot analysis of IL1R1 polyclonal antibody (Cat # PAB4455) in HL-60 cell line lysates (35 ug/lane). IL1R1 (arrow) was detected using the purified IL1R1 polyclonal antibody (Cat # PAB4455) (1 : 60 dilution).



### Immunohistochemistry (Formalin/PFA-fixed paraffin-embedded sections)

Formalin-fixed and paraffin-embedded human prostate carcinoma tissue reacted with IL1R1 polyclonal antibody (Cat # PAB4455) , which was peroxidase-conjugated to the secondary antibody, followed by DAB staining . This data demonstrates the use of this antibody for immunohistochemistry; clinical relevance has not been evaluated .

## Specification

Product Description	Rabbit polyclonal antibody raised against synthetic peptide of IL1RL2.
Immunogen	A synthetic peptide (conjugated with KLH) corresponding to C-terminus (E487) of human IL1RL2.
Host	Rabbit
Reactivity	Human
Form	Liquid
Purification	Protein A purification

<b>Recommend Usage</b>	ELISA (1:1000) Western Blot (1:50-100) Immunohistochemistry (1:10-50) The optimal working dilution should be determined by the end user.
<b>Storage Buffer</b>	In PBS (0.09% sodium azide)
<b>Storage Instruction</b>	Store at 4°C. For long term storage store at -20°C. Aliquot to avoid repeated freezing and thawing.
<b>Note</b>	This product contains sodium azide: a POISONOUS AND HAZARDOUS SUBSTANCE which should be handled by trained staff only.

## Applications

- Western Blot (Cell lysate)

Western blot analysis of IL1R1 polyclonal antibody (Cat # PAB4455) in HL-60 cell line lysates (35 ug/lane). IL1R1 (arrow) was detected using the purified IL1R1 polyclonal antibody (Cat # PAB4455) (1 : 60 dilution).

- Immunohistochemistry (Formalin/PFA-fixed paraffin-embedded sections)

Formalin-fixed and paraffin-embedded human prostate carcinoma tissue reacted with IL1R1 polyclonal antibody (Cat # PAB4455) , which was peroxidase-conjugated to the secondary antibody, followed by DAB staining . This data demonstrates the use of this antibody for immunohistochemistry; clinical relevance has not been evaluated .

- Enzyme-linked Immunoabsorbent Assay

## Gene Info — IL1RL2

<b>Entrez GeneID</b>	<a href="#">8808</a>
<b>Protein Accession#</b>	<a href="#">NP_003845:Q9HB29</a>
<b>Gene Name</b>	IL1RL2
<b>Gene Alias</b>	IL1R-rp2, IL1RRP2
<b>Gene Description</b>	interleukin 1 receptor-like 2
<b>Omim ID</b>	<a href="#">604512</a>
<b>Gene Ontology</b>	<a href="#">Hyperlink</a>

**Gene Summary**

The protein encoded by this gene is a member of the interleukin 1 receptor family. An experiment with transient gene expression demonstrated that this receptor was incapable of binding to interleukin 1 alpha and interleukin 1 beta with high affinity. This gene and four other interleukin 1 receptor family genes, including interleukin 1 receptor, type I (IL1R1), interleukin 1 receptor, type II (IL1R2), interleukin 1 receptor-like 1 (IL1RL1), and interleukin 18 receptor 1 (IL18R1), form a cytokine receptor gene cluster in a region mapped to chromosome 2q12. [provided by RefSeq]

**Other Designations**

interleukin-1 receptor-related protein 2

**Publication Reference**

- [Two novel IL-1 family members, IL-1 delta and IL-1 epsilon, function as an antagonist and agonist of NF-kappa B activation through the orphan IL-1 receptor-related protein 2.](#)

Debets R, Timans JC, Homey B, Zurawski S, Sana TR, Lo S, Wagner J, Edwards G, Clifford T, Menon S, Bazan JF, Kastelein RA.

Journal of Immunology 2001 Aug; 167(3):1440.

- [Interleukin-1 receptor cluster: gene organization of IL1R2, IL1R1, IL1RL2 \(IL-1Rrp2\), IL1RL1 \(T1/ST2\), and IL18R1 \(IL-1Rrp\) on human chromosome 2q.](#)

Dale M, Nicklin MJ.

Genomics 1999 Apr; 57(1):177.

- [Purification and characterization of the human interleukin-18 receptor.](#)

Torigoe K, Ushio S, Okura T, Kobayashi S, Taniai M, Kunikata T, Murakami T, Sanou O, Kojima H, Fujii M, Ohta T, Ikeda M, Ikegami H, Kurimoto M.

The Journal of Biological Chemistry 1997 Oct; 272(41):25737.

**Disease**

- [Genetic Predisposition to Disease](#)
- [Hematologic Diseases](#)
- [Intervertebral Disk Displacement](#)
- [Kidney Failure](#)
- [Occupational Diseases](#)
- [Osteoarthritis](#)