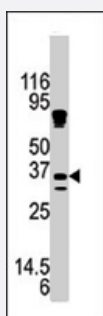


KLK9 polyclonal antibody

Catalog # PAB4418

Size 400 uL

Applications



Western Blot (Tissue lysate)

Western blot analysis of KLK9 polyclonal antibody (Cat # PAB4418) in mouse brain tissue lysate . KLK9 (arrow) was detected using the purified KLK9 polyclonal antibody (Cat # PAB4418) .

Specification

Product Description	Rabbit polyclonal antibody raised against synthetic peptide of KLK9.
Immunogen	A synthetic peptide (conjugated with KLH) corresponding to N-terminus of human KLK9.
Host	Rabbit
Reactivity	Human
Form	Liquid
Purification	Ammonium sulfate precipitation
Recommend Usage	ELISA (1:1000) Western Blot (1:100-500) The optimal working dilution should be determined by the end user.
Storage Buffer	In PBS (0.09% sodium azide)
Storage Instruction	Store at 4°C. For long term storage store at -20°C. Aliquot to avoid repeated freezing and thawing.
Note	This product contains sodium azide: a POISONOUS AND HAZARDOUS SUBSTANCE which should be handled by trained staff only.

Applications

- Western Blot (Tissue lysate)

Western blot analysis of KLK9 polyclonal antibody (Cat # PAB4418) in mouse brain tissue lysate . KLK9 (arrow) was detected using the purified KLK9 polyclonal antibody (Cat # PAB4418) .

- Enzyme-linked Immunoabsorbent Assay

Gene Info — KLK9

Entrez GeneID	284366
Protein Accession#	NP_036447:Q9UKQ9
Gene Name	KLK9
Gene Alias	KLK-L3, KLK8, KLKL3
Gene Description	kallikrein-related peptidase 9
Omim ID	605504
Gene Ontology	Hyperlink
Gene Summary	KLK9 belongs to the kallikrein subgroup of serine proteases, which have diverse physiologic functions in many tissues. For background information on kallikreins, see MIM 147960.[supplied by OMIM]
Other Designations	kallikrein 8 kallikrein 9 kallikrein-like protein 3

Publication Reference

- [Quantitative expression of the human kallikrein gene 9 \(KLK9\) in ovarian cancer: a new independent and favorable prognostic marker.](#)

Yousef GM, Kyriakopoulou LG, Scorilas A, Fracchioli S, Ghiringhello B, Zarghooni M, Chang A, Diamandis M, Giardina G, Hartwick WJ, Richiardi G, Massobrio M, Diamandis EP, Katsaros D.

Cancer Research 2001 Nov; 61(21):7811.

Application: IHC-P, Human, Human serous ovarian carcinoma

- [The expanded human kallikrein gene family: locus characterization and molecular cloning of a new member, KLK-L3 \(KLK9\).](#)

Yousef GM, Diamandis EP.

Genomics 2000 Apr; 65(2):184.

- [The new human kallikrein gene family: implications in carcinogenesis.](#)

Diamandis EP, Yousef GM, Luo LY, Magklara A, Obiezu CV.

Trends in Endocrinology and Metabolism 2000 Mar; 11(2):54.

Disease

- [Genetic Predisposition to Disease](#)
- [Prostatic Neoplasms](#)