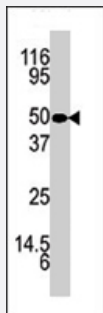


KLK5 polyclonal antibody

Catalog # PAB4411

Size 400 uL

Applications



Western Blot (Tissue lysate)

Western blot analysis of KLK5 polyclonal antibody (Cat # PAB4411) in mouse brain tissue lysate . KLK5 (arrow) was detected using the purified KLK5 polyclonal antibody (Cat # PAB4411) .

Specification

Product Description	Rabbit polyclonal antibody raised against synthetic peptide of KLK5.
Immunogen	A synthetic peptide (conjugated with KLH) corresponding to internal region of human KLK5.
Host	Rabbit
Reactivity	Human
Form	Liquid
Purification	Ammonium sulfate precipitation
Recommend Usage	ELISA (1:1000) Western Blot (1:100-500) The optimal working dilution should be determined by the end user.
Storage Buffer	In PBS (0.09% sodium azide)
Storage Instruction	Store at 4°C. For long term storage store at -20°C. Aliquot to avoid repeated freezing and thawing.
Note	This product contains sodium azide: a POISONOUS AND HAZARDOUS SUBSTANCE which should be handled by trained staff only.

Applications

- Western Blot (Tissue lysate)

Western blot analysis of KLK5 polyclonal antibody (Cat # PAB4411) in mouse brain tissue lysate . KLK5 (arrow) was detected using the purified KLK5 polyclonal antibody (Cat # PAB4411) .

- Enzyme-linked Immunoabsorbent Assay

Gene Info — KLK5

Entrez GeneID [25818](#)

Protein Accession# [NP_036559:Q9Y337](#)

Gene Name KLK5

Gene Alias KLK-L2, KLKL2, SCTE

Gene Description kallikrein-related peptidase 5

Omim ID [605643](#)

Gene Ontology [Hyperlink](#)

Gene Summary Kallikreins are a subgroup of serine proteases having diverse physiological functions. Growing evidence suggests that many kallikreins are implicated in carcinogenesis and some have potential as novel cancer and other disease biomarkers. This gene is one of the fifteen kallikrein subfamily members located in a cluster on chromosome 19. Its expression is up-regulated by estrogens and progestins. The encoded protein is secreted and may be involved in desquamation in the epidermis. Alternative splicing results in multiple transcript variants encoding the same protein. [provided by RefSeq]

Other Designations kallikrein 5|kallikrein-like protein 2|stratum corneum tryptic enzyme

Publication Reference

- [KLK5 and KLK7, two members of the human tissue kallikrein family, are differentially expressed in lung cancer.](#)

Planque C, de Monte M, Guyetant S, Rollin J, Desmazes C, Panel V, Lemarie E, Courty Y.

Biochemical and Biophysical Research Communications 2005 Apr; 329(4):1260.

- [Biochemical and enzymatic characterization of human kallikrein 5 \(hK5\), a novel serine protease potentially involved in cancer progression.](#)

Michael IP, Sotiropoulou G, Pampalakis G, Magklara A, Ghosh M, Wasney G, Diamandis EP.

The Journal of Biological Chemistry 2005 Apr; 280(15):14628.

- [LEKTI is localized in lamellar granules, separated from KLK5 and KLK7, and is secreted in the extracellular spaces of the superficial stratum granulosum.](#)

Ishida-Yamamoto A, Deraison C, Bonnart C, Bitoun E, Robinson R, O'Brien TJ, Wakamatsu K, Ohtsubo S, Takahashi H, Hashimoto Y, Dopping-Hepenstal PJ, McGrath JA, Iizuka H, Richard G, Hovnanian A.

The Journal of Investigative Dermatology 2005 Feb; 124(2):360.

Disease

- [Genetic Predisposition to Disease](#)
- [Prostatic Neoplasms](#)