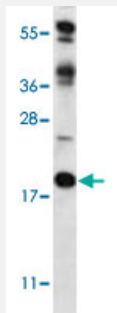


RCAN2 polyclonal antibody

Catalog # PAB4388

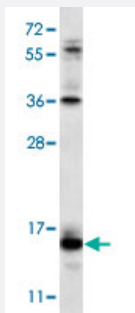
Size 400 uL

Applications



Western Blot (Tissue lysate)

Western blot analysis of mouse heart tissue lysate (35 ug/lane) with RCAN2 polyclonal antibody (Cat # PAB4388).



Western Blot (Cell lysate)

Western blot analysis of NCI-H460 cell lysate (35 ug/lane) with RCAN2 polyclonal antibody (Cat # PAB4388).

Specification

Product Description	Rabbit polyclonal antibody raised against synthetic peptide of RCAN2.
Immunogen	A synthetic peptide (conjugated with KLH) corresponding to N-terminus of human RCAN2.
Host	Rabbit
Reactivity	Human, Mouse
Form	Liquid
Purification	Protein A purification

Recommend Usage	ELISA (1:1000) Western Blot (1:100-500) The optimal working dilution should be determined by the end user.
Storage Buffer	In PBS (0.09% sodium azide)
Storage Instruction	Store at 4°C. For long term storage store at -20°C. Aliquot to avoid repeated freezing and thawing.
Note	This product contains sodium azide: a POISONOUS AND HAZARDOUS SUBSTANCE which should be handled by trained staff only.

Applications

- Western Blot (Tissue lysate)

Western blot analysis of mouse heart tissue lysate (35 ug/lane) with RCAN2 polyclonal antibody (Cat # PAB4388).

- Western Blot (Cell lysate)

Western blot analysis of NCI-H460 cell lysate (35 ug/lane) with RCAN2 polyclonal antibody (Cat # PAB4388).

- Enzyme-linked Immunoabsorbent Assay

Gene Info — RCAN2

Entrez GeneID	10231
Protein Accession#	NP_005813:Q14206
Gene Name	RCAN2
Gene Alias	CSP2, DSCR1L1, MCIP2, RCN2, ZAKI-4, ZAKI4, hRCN2
Gene Description	regulator of calcineurin 2
Omim ID	604876
Gene Ontology	Hyperlink
Other Designations	Calciressin 2 (Thyroid hormone-responsive protein ZAKI-4) (Down syndrome candidate region 1-like 1) (Myocyte-enriched calcineurin interacting protein 2) (MCIP2) Down syndrome candidate region 1-like 1 Down syndrome critical region gene 1-like 1 Down synd

Publication Reference

- [DSCR1, overexpressed in Down syndrome, is an inhibitor of calcineurin-mediated signaling pathways.](#)
Fuentes JJ, Genesca L, Kingsbury TJ, Cunningham KW, Perez-Riba M, Estivill X, de la Luna S.
Human Molecular Genetics 2000 Jul; 9(11):1681.
- [A protein encoded within the Down syndrome critical region is enriched in striated muscles and inhibits calcineurin signaling.](#)
Rothermel B, Vega RB, Yang J, Wu H, Bassel-Duby R, Williams RS.
The Journal of Biological Chemistry 2000 Mar; 275(12):8719.
- [A new gene family including DSCR1 \(Down Syndrome Candidate Region 1\) and ZAKI-4: characterization from yeast to human and identification of DSCR1-like 2, a novel human member \(DSCR1L2\).](#)
Strippoli P, Lenzi L, Petrini M, Carinci P, Zannotti M.
Genomics 2000 Mar; 64(3):252.

Disease

- [Tobacco Use Disorder](#)