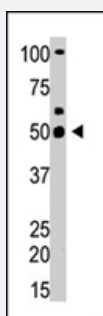


YY1 polyclonal antibody

Catalog # PAB4360

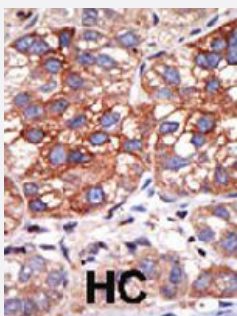
Size 400 uL

Applications



Western Blot (Cell lysate)

Western blot analysis of YY1 polyclonal antibody (Cat # PAB4360) in HeLa cell lysate . YY1 (arrow) was detected using purified YY1 polyclonal antibody (Cat # PAB4360) . Secondary HRP-anti-rabbit was used for signal visualization with chemiluminescence .



Immunohistochemistry (Formalin/PFA-fixed paraffin-embedded sections)

Formalin-fixed and paraffin-embedded human hepatocellular carcinoma tissue reacted with YY1 polyclonal antibody (Cat # PAB4360) , which was peroxidase-conjugated to the secondary antibody, followed by DAB staining . This data demonstrates the use of this antibody for immunohistochemistry; clinical relevance has not been evaluated . HC = hepatocarcinoma .

Specification

Product Description	Rabbit polyclonal antibody raised against synthetic peptide of YY1.
Immunogen	A synthetic peptide (conjugated with KLH) corresponding to N-terminus of human YY1.
Host	Rabbit
Reactivity	Human
Form	Liquid
Purification	Protein G purification

Recommend Usage	ELISA (1:1000) Western Blot (1:100-500) Immunohistochemistry (1:50-100) The optimal working dilution should be determined by the end user.
Storage Buffer	In PBS (0.09% sodium azide)
Storage Instruction	Store at 4°C. For long term storage store at -20°C. Aliquot to avoid repeated freezing and thawing.
Note	This product contains sodium azide: a POISONOUS AND HAZARDOUS SUBSTANCE which should be handled by trained staff only.

Applications

- Western Blot (Cell lysate)

Western blot analysis of YY1 polyclonal antibody (Cat # PAB4360) in HeLa cell lysate . YY1 (arrow) was detected using purified YY1 polyclonal antibody (Cat # PAB4360) . Secondary HRP-anti-rabbit was used for signal visualization with chemiluminescence .

- Immunohistochemistry (Formalin/PFA-fixed paraffin-embedded sections)

Formalin-fixed and paraffin-embedded human hepatocellular carcinoma tissue reacted with YY1 polyclonal antibody (Cat # PAB4360) , which was peroxidase-conjugated to the secondary antibody, followed by DAB staining . This data demonstrates the use of this antibody for immunohistochemistry; clinical relevance has not been evaluated . HC = hepatocarcinoma .

- Enzyme-linked Immunoabsorbent Assay

Gene Info — YY1

Entrez GeneID	7528
Protein Accession#	P25490
Gene Name	YY1
Gene Alias	DELTA, INO80S, NF-E1, UCRBP, YIN-YANG-1
Gene Description	YY1 transcription factor
Omim ID	600013
Gene Ontology	Hyperlink

Gene Summary

YY1 is a ubiquitously distributed transcription factor belonging to the GLI-Kruppel class of zinc finger proteins. The protein is involved in repressing and activating a diverse number of promoters. YY1 may direct histone deacetylases and histone acetyltransferases to a promoter in order to activate or repress the promoter, thus implicating histone modification in the function of YY1. [provided by RefSeq]

Other Designations

INO80 complex subunit S|Yin and Yang 1 protein

Publication Reference

- [Nuclear factor YY1 inhibits transforming growth factor beta- and bone morphogenetic protein-induced cell differentiation.](#)

Kurisaki K, Kurisaki A, Valcourt U, Terentiev AA, Pardali K, Ten Dijke P, Heldin CH, Ericsson J, Moustakas A.
Molecular and Cellular Biology 2003 Jul; 23(13):4494.

Application: IP, IP-WB, WB-Ce, WB-Tr, Human, Monkey, MDA-MB-468, HaCaT, COS-7 cells

- [Modulation of YY1 activity by SAP30.](#)

Huang NE, Lin CH, Lin YS, Yu WC.

Biochemical and Biophysical Research Communications 2003 Jun; 306(1):267.

Application: IP, WB-Ce, Human, HeLa, H1299 cells

- [Yin Yang 1 is increased in human heart failure and represses the activity of the human alpha-myosin heavy chain promoter.](#)

Sucharov CC, Mariner P, Long C, Bristow M, Leinwand L.

The Journal of Biological Chemistry 2003 Aug; 278(33):31233.

Application: WB-Ti, Human, Mouse, Heart

Disease

- [Cardiovascular Diseases](#)
- [Diabetes Mellitus](#)
- [Edema](#)