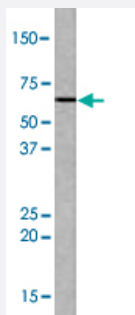


EZH1 polyclonal antibody

Catalog # PAB4353

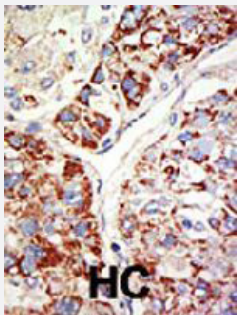
Size 400 uL

Applications



Western Blot (Cell lysate)

Western blot analysis of 293 cell lysate (35 ug/lane) with EZH1 polyclonal antibody (Cat # PAB4353).



Immunohistochemistry (Formalin/PFA-fixed paraffin-embedded sections)

Formalin-fixed and paraffin-embedded human hepatocellular carcinoma tissue reacted with EZH1 polyclonal antibody (Cat # PAB4353), which was peroxidase-conjugated to the secondary antibody, followed by DAB staining. This data demonstrates the use of this antibody for immunohistochemistry; clinical relevance has not been evaluated. HC = hepatocarcinoma.

Specification

Product Description	Rabbit polyclonal antibody raised against synthetic peptide of EZH1.
Immunogen	A synthetic peptide (conjugated with KLH) corresponding to internal region of human EZH1.
Host	Rabbit
Reactivity	Human
Form	Liquid
Purification	Protein G purification

Recommend Usage	ELISA (1:1000) Western Blot (1:50-100) Immunohistochemistry (1:50-100) The optimal working dilution should be determined by the end user.
Storage Buffer	In PBS (0.09% sodium azide)
Storage Instruction	Store at 4°C. For long term storage store at -20°C. Aliquot to avoid repeated freezing and thawing.
Note	This product contains sodium azide: a POISONOUS AND HAZARDOUS SUBSTANCE which should be handled by trained staff only.

Applications

- Western Blot (Cell lysate)

Western blot analysis of 293 cell lysate (35 ug/lane) with EZH1 polyclonal antibody (Cat # PAB4353).

- Immunohistochemistry (Formalin/PFA-fixed paraffin-embedded sections)

Formalin-fixed and paraffin-embedded human hepatocellular carcinoma tissue reacted with EZH1 polyclonal antibody (Cat # PAB4353), which was peroxidase-conjugated to the secondary antibody, followed by DAB staining. This data demonstrates the use of this antibody for immunohistochemistry; clinical relevance has not been evaluated. HC = hepatocarcinoma.

- Enzyme-linked Immunoabsorbent Assay

Gene Info — EZH1

Entrez GeneID	2145
Protein Accession#	Q92800
Gene Name	EZH1
Gene Alias	KIAA0388
Gene Description	enhancer of zeste homolog 1 (Drosophila)
Omim ID	601674
Gene Ontology	Hyperlink
Gene Summary	EZH1 is a component of a noncanonical Polycomb repressive complex-2 (PRC2) that mediates methylation of histone H3 (see MIM 602812) lys27 (H3K27) and functions in the maintenance of embryonic stem cell pluripotency and plasticity (Shen et al., 2008 [PubMed 19026780]).[supplied by OMIM]

Other Designations

enhancer of zeste homolog 1

Publication Reference

- [Cloning and expression of a human/mouse Polycomb group gene, ENX-2/Enx-2.](#)

Ogawa M, Hiraoka Y, Taniguchi K, Aiso S.

Biochimica et Biophysica Acta 1998 Jan; 1395(2):151.

Application: ICC, Mouse, Neuro-2a cells

- [Characterization of EZH1, a human homolog of Drosophila Enhancer of zeste near BRCA1.](#)

Abel KJ, Brody LC, Valdes JM, Erdos MR, McKinley DR, Castilla LH, Merajver SD, Couch FJ, Friedman LS, Ostermeyer EA, Lynch ED, King MC, Welch PL, Osborne-Lawrence S, Spillman M, Bowcock AM, Collins FS, Weber BL.

Genomics 1996 Oct; 37(2):161.

- [22 genes from chromosome 17q21: cloning, sequencing, and characterization of mutations in breast cancer families and tumors.](#)

Friedman LS, Ostermeyer EA, Lynch ED, Welch P, Szabo CI, Meza JE, Anderson LA, Dowd P, Lee MK, Rowell SE, et al..

Genomics 1995 Jan; 25(1):256.

Disease

- [Head and Neck Neoplasms](#)
- [Neoplasm Recurrence](#)
- [Neoplasms](#)