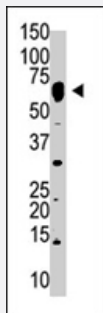


NUB1 polyclonal antibody

Catalog # PAB4349

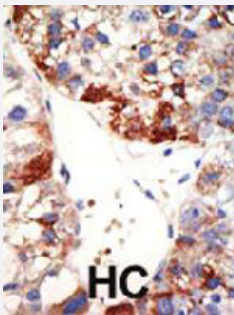
Size 400 uL

Applications



Western Blot (Tissue lysate)

The NUB1 polyclonal antibody (Cat # PAB4349) is used in Western blot to detect NUB1 in mouse liver lysate .



Immunohistochemistry (Formalin/PFA-fixed paraffin-embedded sections)

Formalin-fixed and paraffin-embedded human hepatocellular carcinoma tissue reacted with NUB1 polyclonal antibody (Cat # PAB4349) , which was peroxidase-conjugated to the secondary antibody, followed by DAB staining . This data demonstrates the use of this antibody for immunohistochemistry; clinical relevance has not been evaluated . HC = hepatocarcinoma .

Specification

Product Description	Rabbit polyclonal antibody raised against synthetic peptide of NUB1.
Immunogen	A synthetic peptide (conjugated with KLH) corresponding to N-terminus of human NUB1.
Host	Rabbit
Reactivity	Human, Mouse
Form	Liquid
Purification	Protein G purification

Recommend Usage	ELISA (1:1000) Western Blot (1:100-500) Immunohistochemistry (1:50-100) The optimal working dilution should be determined by the end user.
Storage Buffer	In PBS (0.09% sodium azide)
Storage Instruction	Store at 4°C. For long term storage store at -20°C. Aliquot to avoid repeated freezing and thawing.
Note	This product contains sodium azide: a POISONOUS AND HAZARDOUS SUBSTANCE which should be handled by trained staff only.

Applications

- Western Blot (Tissue lysate)

The NUB1 polyclonal antibody (Cat # PAB4349) is used in Western blot to detect NUB1 in mouse liver lysate .

- Immunohistochemistry (Formalin/PFA-fixed paraffin-embedded sections)

Formalin-fixed and paraffin-embedded human hepatocellular carcinoma tissue reacted with NUB1 polyclonal antibody (Cat # PAB4349) , which was peroxidase-conjugated to the secondary antibody, followed by DAB staining . This data demonstrates the use of this antibody for immunohistochemistry; clinical relevance has not been evaluated . HC = hepatocarcinoma .

- Enzyme-linked Immunoabsorbent Assay

Gene Info — NUB1

Entrez GeneID	51667
Protein Accession#	NP_057202:Q9Y5A7
Gene Name	NUB1
Gene Alias	BS4, NUB1L, NYREN18
Gene Description	negative regulator of ubiquitin-like proteins 1
Omim ID	607981
Gene Ontology	Hyperlink
Gene Summary	NUB1 interacts with and negatively regulates NEDD8 (MIM 603171), a ubiquitin-like protein that covalently conjugates to cullin (see MIM 603134) family members.[supplied by OMIM]
Other Designations	NEDD8 ultimate buster-1 NY-REN-18 antigen

Publication Reference

- [Regulation of the NEDD8 conjugation system by a splicing variant, NUB1L.](#)

Tanaka T, Kawashima H, Yeh ET, Kamitani T.

The Journal of Biological Chemistry 2003 Aug; 278(35):32905.

Application: WB-Tr, Yeast, AH109 yeast cells

- [NUB1, a NEDD8-interacting protein, is induced by interferon and down-regulates the NEDD8 expression.](#)

Kito K, Yeh ET, Kamitani T.

The Journal of Biological Chemistry 2001 Jun; 276(23):20603.

Application: WB-Ce, Human, HeLa, 293, U2OS