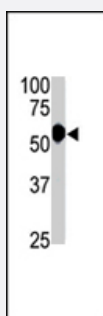


ZMPSTE24 polyclonal antibody

Catalog # PAB4317

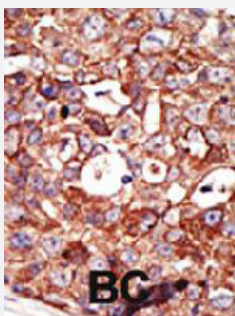
Size 400 uL

Applications



Western Blot (Tissue lysate)

The ZMPSTE24 polyclonal antibody (Cat # PAB4317) is used in Western blot to detect ZMPSTE24 in mouse cerebellum tissue lysate .



Immunohistochemistry (Formalin/PFA-fixed paraffin-embedded sections)

Formalin-fixed and paraffin-embedded human cancer tissue reacted with ZMPSTE24 polyclonal antibody (Cat # PAB4317) , which was peroxidase-conjugated to the secondary antibody, followed by DAB staining . This data demonstrates the use of this antibody for immunohistochemistry; clinical relevance has not been evaluated . BC = breast carcinoma .

Specification

Product Description	Rabbit polyclonal antibody raised against synthetic peptide of ZMPSTE24.
Immunogen	A synthetic peptide (conjugated with KLH) corresponding to internal region of human ZMPSTE24.
Host	Rabbit
Reactivity	Human, Mouse
Form	Liquid
Purification	Protein G purification

Recommend Usage	ELISA (1:1000) Western Blot (1:100-500) Immunohistochemistry (1:50-100) The optimal working dilution should be determined by the end user.
Storage Buffer	In PBS (0.09% sodium azide)
Storage Instruction	Store at 4°C. For long term storage store at -20°C. Aliquot to avoid repeated freezing and thawing.
Note	This product contains sodium azide: a POISONOUS AND HAZARDOUS SUBSTANCE which should be handled by trained staff only.

Applications

- Western Blot (Tissue lysate)

The ZMPSTE24 polyclonal antibody (Cat # PAB4317) is used in Western blot to detect ZMPSTE24 in mouse cerebellum tissue lysate .

- Immunohistochemistry (Formalin/PFA-fixed paraffin-embedded sections)

Formalin-fixed and paraffin-embedded human cancer tissue reacted with ZMPSTE24 polyclonal antibody (Cat # PAB4317) , which was peroxidase-conjugated to the secondary antibody, followed by DAB staining . This data demonstrates the use of this antibody for immunohistochemistry; clinical relevance has not been evaluated . BC = breast carcinoma .

- Enzyme-linked Immunoabsorbent Assay

Gene Info — ZMPSTE24

Entrez GeneID	10269
Protein Accession#	FAC1_HUMAN
Gene Name	ZMPSTE24
Gene Alias	FACE-1, FACE1, FLJ14968, STE24, Ste24p
Gene Description	zinc metalloproteinase (STE24 homolog, S. cerevisiae)
Omim ID	275210 606480 608612
Gene Ontology	Hyperlink

Gene Summary

This gene encodes a member of the peptidase M48A family. The encoded protein is a zinc metalloproteinase involved in the two step post-translational proteolytic cleavage of carboxy terminal residues of farnesylated prelamin A to form mature lamin A. Mutations in this gene have been associated with mandibuloacral dysplasia and restrictive dermopathy. [provided by RefSeq]

Other Designations

CAAX prenyl protease|OTTHUMP00000006394|farnesylated-proteins converting enzyme 1|prenyl protein-specific endoprotease 1|zinc metalloproteinase STE24

Publication Reference

- [Prelamin A endoproteolytic processing in vitro by recombinant Zmpste24.](#)

Corrigan DP, Kuszczak D, Rusinol AE, Thewke DP, Hrycina CA, Michaelis S, Sinensky MS.

The Biochemical Journal 2005 Apr; 387(Pt 1):129.

Disease

- [Alzheimer disease](#)
- [Cardiovascular Diseases](#)
- [Diabetes Mellitus](#)
- [Edema](#)
- [Genetic Predisposition to Disease](#)
- [Metabolic Syndrome X](#)