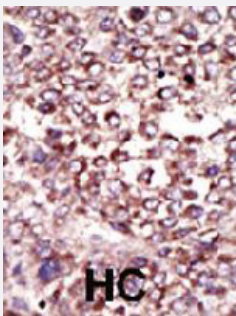


RPN2 polyclonal antibody

Catalog # PAB4311 Size 400 uL

Applications



Immunohistochemistry (Formalin/PFA-fixed paraffin-embedded sections)

Formalin-fixed and paraffin-embedded human hepatocellular carcinoma tissue reacted with RPN2 polyclonal antibody (Cat # PAB4311) , which was peroxidase-conjugated to the secondary antibody, followed by DAB staining . This data demonstrates the use of this antibody for immunohistochemistry; clinical relevance has not been evaluated . HC = hepatocarcinoma .

Specification

Product Description	Rabbit polyclonal antibody raised against synthetic peptide of RPN2.
Immunogen	A synthetic peptide (conjugated with KLH) corresponding to N-terminus of human RPN2.
Host	Rabbit
Reactivity	Human
Form	Liquid
Purification	Protein G purification
Recommend Usage	ELISA (1:1000) Western Blot (1:100-500) Immunohistochemistry (1:50-100) The optimal working dilution should be determined by the end user.
Storage Buffer	In PBS (0.09% sodium azide)
Storage Instruction	Store at 4°C. For long term storage store at -20°C. Aliquot to avoid repeated freezing and thawing.

Note

This product contains sodium azide: a POISONOUS AND HAZARDOUS SUBSTANCE which should be handled by trained staff only.

Applications

- Western Blot
- Immunohistochemistry (Formalin/PFA-fixed paraffin-embedded sections)

Formalin-fixed and paraffin-embedded human hepatocellular carcinoma tissue reacted with RPN2 polyclonal antibody (Cat # PAB4311) , which was peroxidase-conjugated to the secondary antibody, followed by DAB staining . This data demonstrates the use of this antibody for immunohistochemistry; clinical relevance has not been evaluated . HC = hepatocarcinoma .

- Enzyme-linked Immunoabsorbent Assay

Gene Info — RPN2

Entrez GeneID [6185](#)

Protein Accession# [RIB2_HUMAN](#)

Gene Name RPN2

Gene Alias RIBIIR, RPN-II, RPNII, SWP1

Gene Description ribophorin II

Omim ID [180490](#)

Gene Ontology [Hyperlink](#)

Gene Summary This gene encodes a type I integral membrane protein found only in the rough endoplasmic reticulum. The encoded protein is part of an N-oligosaccharyl transferase complex that links high mannose oligosaccharides to asparagine residues found in the Asn-X-Ser/Thr consensus motif of nascent polypeptide chains. This protein is similar in sequence to the yeast oligosaccharyl transferase subunit SWP1. Alternatively spliced transcript variants encoding different isoforms have been found for this gene. [provided by RefSeq]

Other Designations dolichyl-diphosphooligosaccharide--protein glycosyltransferase 63 kDa subunit

Publication Reference

- [Oligosaccharyltransferase isoforms that contain different catalytic STT3 subunits have distinct enzymatic properties.](#)

Kelleher DJ, Karaoglu D, Mandon EC, Gilmore R.

Molecular Cell 2003 Jul; 12(1):101.

Application: WB-Re, Recombinant protein

- [Retention of subunits of the oligosaccharyltransferase complex in the endoplasmic reticulum.](#)

Fu J, Kreibich G.

The Journal of Biological Chemistry 2000 Feb; 275(6):3984.

Application: IP, Human, HeLa cells

- [Mapping of the ribophorin II \(RPN II\) gene to human chromosome 20q12-q13.1 by in-situ hybridization.](#)

Loffler C, Rao VV, Hansmann I.

Human Genetics 1991 Jun; 87(2):221.

Pathway

- [Metabolic pathways](#)
- [N-Glycan biosynthesis](#)

Disease

- [Tobacco Use Disorder](#)