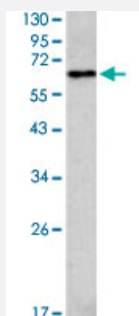


METAP2 polyclonal antibody

Catalog # PAB4290

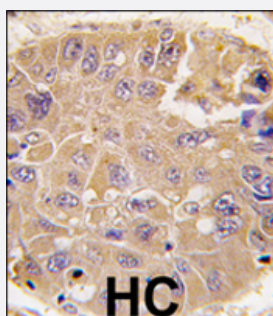
Size 400 uL

Applications



Western Blot (Cell lysate)

Western blot analysis of 293 cell lysate (35 ug/lane) with METAP2 polyclonal antibody (Cat # PAB4290).



Immunohistochemistry (Formalin/PFA-fixed paraffin-embedded sections)

Formalin-fixed and paraffin-embedded human hepatocellular carcinoma reacted with METAP2 polyclonal antibody (Cat # PAB4290), which was peroxidase-conjugated to the secondary antibody, followed by DAB staining. This data demonstrates the use of this antibody for immunohistochemistry; clinical relevance has not been evaluated.

Specification

Product Description	Rabbit polyclonal antibody raised against synthetic peptide of METAP2.
Immunogen	A synthetic peptide (conjugated with KLH) corresponding to C-terminus of human METAP2.
Host	Rabbit
Reactivity	Human
Form	Liquid
Purification	Protein G purification

Recommend Usage	ELISA (1:1000) Immunohistochemistry (1:10-50) The optimal working dilution should be determined by the end user.
Storage Buffer	In PBS (0.09% sodium azide)
Storage Instruction	Store at 4°C. For long term storage store at -20°C. Aliquot to avoid repeated freezing and thawing.
Note	This product contains sodium azide: a POISONOUS AND HAZARDOUS SUBSTANCE which should be handled by trained staff only.

Applications

- Western Blot (Cell lysate)

Western blot analysis of 293 cell lysate (35 ug/lane) with METAP2 polyclonal antibody (Cat # PAB4290).

- Immunohistochemistry (Formalin/PFA-fixed paraffin-embedded sections)

Formalin-fixed and paraffin-embedded human hepatocellular carcinoma reacted with METAP2 polyclonal antibody (Cat # PAB4290), which was peroxidase-conjugated to the secondary antibody, followed by DAB staining. This data demonstrates the use of this antibody for immunohistochemistry; clinical relevance has not been evaluated.

- Enzyme-linked Immunoabsorbent Assay

Gene Info — METAP2

Entrez GeneID	10988
Protein Accession#	AMP2_HUMAN
Gene Name	METAP2
Gene Alias	MAP2, MNPEP, p67, p67eIF2
Gene Description	methionyl aminopeptidase 2
Omim ID	601870
Gene Ontology	Hyperlink

Gene Summary

This gene is a member of the methionyl aminopeptidase family and encodes a protein that binds 2 cobalt or manganese ions. This protein functions both by protecting the alpha subunit of eukaryotic initiation factor 2 from inhibitory phosphorylation and by removing the amino-terminal methionine residue from nascent protein. Increased expression of this gene is associated with various forms of cancer and the anti-cancer drugs fumagillin and ovalicin inhibit the protein by irreversibly binding to its active site. A pseudogene of this gene is located on chromosome 2. [provided by RefSeq]

Other Designations

eIF-2-associated p67 homolog|initiation factor 2-associated 67 kDa glycoprotein|peptidase M 2

Publication Reference

- [Physiologically relevant metal cofactor for methionine aminopeptidase-2 is manganese.](#)

Wang J, Sheppard GS, Lou P, Kawai M, Park C, Egan DA, Schneider A, Bouska J, Lesniewski R, Henkin J.
Biochemistry 2003 May; 42(17):5035.

- [Negative regulation of the protection of eIF2alpha phosphorylation activity by a unique acidic domain present at the N-terminus of p67.](#)

Datta R, Tammali R, Datta B.
Experimental Cell Research 2003 Feb; 283(2):237.

Application: WB, Rat, KRC-7 cells

Disease

- [Genetic Predisposition to Disease](#)
- [Lung Neoplasms](#)