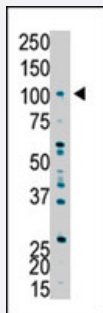


UBE3A polyclonal antibody

Catalog # PAB4222

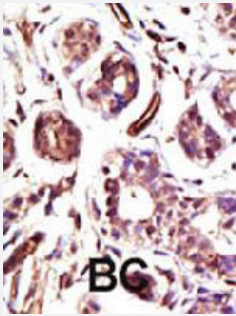
Size 400 uL

Applications



Western Blot (Cell lysate)

The UBE3A polyclonal antibody (Cat # PAB4222) is used in Western blot to detect UBE3A in Y-79 cell lysate .



Immunohistochemistry (Formalin/PFA-fixed paraffin-embedded sections)

Formalin-fixed and paraffin-embedded human cancer tissue reacted with UBE3A polyclonal antibody (Cat # PAB4222) , which was peroxidase-conjugated to the secondary antibody, followed by DAB staining . This data demonstrates the use of this antibody for immunohistochemistry; clinical relevance has not been evaluated . BC = breast carcinoma .

Specification

Product Description	Rabbit polyclonal antibody raised against synthetic peptide of UBE3A.
Immunogen	A synthetic peptide (conjugated with KLH) corresponding to C-terminus of human UBE3A.
Host	Rabbit
Reactivity	Human
Form	Liquid
Purification	Protein G purification

Recommend Usage	ELISA (1:1000) Western Blot (1:100-500) Immunohistochemistry (1:50-100) The optimal working dilution should be determined by the end user.
Storage Buffer	In PBS (0.09% sodium azide)
Storage Instruction	Store at 4°C. For long term storage store at -20°C. Aliquot to avoid repeated freezing and thawing.
Note	This product contains sodium azide: a POISONOUS AND HAZARDOUS SUBSTANCE which should be handled by trained staff only.

Applications

- Western Blot (Cell lysate)

The UBE3A polyclonal antibody (Cat # PAB4222) is used in Western blot to detect UBE3A in Y-79 cell lysate .

- Immunohistochemistry (Formalin/PFA-fixed paraffin-embedded sections)

Formalin-fixed and paraffin-embedded human cancer tissue reacted with UBE3A polyclonal antibody (Cat # PAB4222) , which was peroxidase-conjugated to the secondary antibody, followed by DAB staining . This data demonstrates the use of this antibody for immunohistochemistry; clinical relevance has not been evaluated . BC = breast carcinoma .

- Enzyme-linked Immunoabsorbent Assay

Gene Info — UBE3A

Entrez GeneID	7337
Protein Accession#	Q05086
Gene Name	UBE3A
Gene Alias	ANCR, AS, E6-AP, EPVE6AP, FLJ26981, HPVE6A
Gene Description	ubiquitin protein ligase E3A
Omim ID	105830 601623
Gene Ontology	Hyperlink

Gene Summary

This gene encodes an E3 ubiquitin-protein ligase, part of the ubiquitin protein degradation system. This imprinted gene is maternally expressed in brain and biallelically expressed in other tissues. Maternally inherited deletion of this gene causes Angelman Syndrome, characterized by severe motor and intellectual retardation, ataxia, hypotonia, epilepsy, absence of speech, and characteristic facies. The protein also interacts with the E6 protein of human papillomavirus types 16 and 18, resulting in ubiquitination and proteolysis of tumor protein p53. Alternative splicing of this gene results in three transcript variants encoding three isoforms with different N-termini. Additional transcript variants have been described, but their full length nature has not been determined. [provided by RefSeq]

Other Designations

CTCL tumor antigen se37-2|human papilloma virus E6-associated protein|oncogenic protein-associated protein E6-AP

Publication Reference

- [Solution structure determination and mutational analysis of the papillomavirus E6 interacting peptide of E6AP.](#)

Be X, Hong Y, Wei J, Androphy EJ, Chen JJ, Baleja JD.

Biochemistry 2001 Feb; 40(5):1293.

- [The hPLIC proteins may provide a link between the ubiquitination machinery and the proteasome.](#)

Kleijnen MF, Shih AH, Zhou P, Kumar S, Soccio RE, Kedersha NL, Gill G, Howley PM.

Molecular Cell 2000 Aug; 6(2):409.

- [Structure of an E6AP-UbCH7 complex: insights into ubiquitination by the E2-E3 enzyme cascade.](#)

Huang L, Kinnucan E, Wang G, Beaudenon S, Howley PM, Huibregtse JM, Pavletich NP.

Science 1999 Nov; 286(5443):1321.

Pathway

- [Ubiquitin mediated proteolysis](#)

Disease

- [Attention Deficit Disorder with Hyperactivity](#)
- [Autistic Disorder](#)
- [Genetic Predisposition to Disease](#)

- [Mental Disorders](#)
- [NARP](#)
- [Tuberculosis](#)