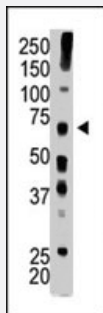


USP22 polyclonal antibody

Catalog # PAB4210

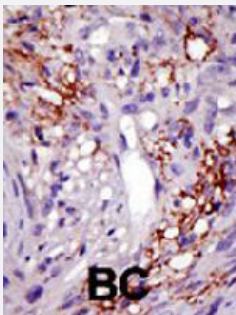
Size 400 uL

Applications



Western Blot (Tissue lysate)

The USP22 polyclonal antibody (Cat # PAB4210) is used in Western blot to detect USP22 in mouse brain tissue lysate .



Immunohistochemistry (Formalin/PFA-fixed paraffin-embedded sections)

Formalin-fixed and paraffin-embedded human cancer tissue reacted with USP22 polyclonal antibody (Cat # PAB4210) , which was peroxidase-conjugated to the secondary antibody, followed by DAB staining . This data demonstrates the use of this antibody for immunohistochemistry; clinical relevance has not been evaluated . BC = breast carcinoma .

Specification

Product Description	Rabbit polyclonal antibody raised against synthetic peptide of USP22.
Immunogen	A synthetic peptide (conjugated with KLH) corresponding to C-terminus of human USP22.
Host	Rabbit
Reactivity	Human
Form	Liquid
Purification	Protein G purification

Recommend Usage	ELISA (1:1000) Western Blot (1:100-500) Immunohistochemistry (1:50-100) The optimal working dilution should be determined by the end user.
Storage Buffer	In PBS (0.09% sodium azide)
Storage Instruction	Store at 4°C. For long term storage store at -20°C. Aliquot to avoid repeated freezing and thawing.
Note	This product contains sodium azide: a POISONOUS AND HAZARDOUS SUBSTANCE which should be handled by trained staff only.

Applications

- Western Blot (Tissue lysate)

The USP22 polyclonal antibody (Cat # PAB4210) is used in Western blot to detect USP22 in mouse brain tissue lysate .

- Immunohistochemistry (Formalin/PFA-fixed paraffin-embedded sections)

Formalin-fixed and paraffin-embedded human cancer tissue reacted with USP22 polyclonal antibody (Cat # PAB4210) , which was peroxidase-conjugated to the secondary antibody, followed by DAB staining . This data demonstrates the use of this antibody for immunohistochemistry; clinical relevance has not been evaluated . BC = breast carcinoma .

- Enzyme-linked Immunoabsorbent Assay

Gene Info — USP22

Entrez GeneID	23326
Protein Accession#	XP_042698:Q9UPT9
Gene Name	USP22
Gene Alias	KIAA1063, USP3L
Gene Description	ubiquitin specific peptidase 22
Gene Ontology	Hyperlink
Other Designations	deubiquitinating enzyme 22 ubiquitin carboxyl-terminal hydrolase 22 ubiquitin specific peptidase 3-like ubiquitin specific protease 22 ubiquitin thiolesterase 22 ubiquitin-specific processing protease 22

Publication Reference

- [Prediction of the coding sequences of unidentified human genes. XIV. The complete sequences of 100 new cDNA clones from brain which code for large proteins in vitro.](#)

Kikuno R, Nagase T, Ishikawa K, Hirose M, Miyajima N, Tanaka A, Kotani H, Nomura N, Ohara O.

DNA Research 1999 Jun; 6(3):197.