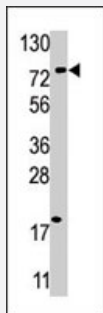


USP16 polyclonal antibody

Catalog # PAB4204

Size 400 uL

Applications



Western Blot (Cell lysate)

Western blot analysis of USP16 polyclonal antibody (Cat # PAB4204) in HL-60 cell line lysate (35 ug/lane). USP16 (arrow) was detected using the purified USP16 polyclonal antibody (Cat # PAB4204).

Specification

Product Description	Rabbit polyclonal antibody raised against synthetic peptide of USP16.
Immunogen	A synthetic peptide (conjugated with KLH) corresponding to internal region of human USP16.
Host	Rabbit
Reactivity	Human
Form	Liquid
Purification	Protein G purification
Recommend Usage	ELISA (1:1000) Western Blot (1:100-500) The optimal working dilution should be determined by the end user.
Storage Buffer	In PBS (0.09% sodium azide)
Storage Instruction	Store at 4°C. For long term storage store at -20°C. Aliquot to avoid repeated freezing and thawing.
Note	This product contains sodium azide: a POISONOUS AND HAZARDOUS SUBSTANCE which should be handled by trained staff only.

Applications

- Western Blot (Cell lysate)

Western blot analysis of USP16 polyclonal antibody (Cat # PAB4204) in HL-60 cell line lysate (35 ug/lane). USP16 (arrow) was detected using the purified USP16 polyclonal antibody (Cat # PAB4204).

- Enzyme-linked Immunoabsorbent Assay

Gene Info — USP16

Entrez GeneID	10600
---------------	-----------------------

Protein Accession#	UB16_HUMAN
--------------------	----------------------------

Gene Name	USP16
-----------	-------

Gene Alias	UBP-M
------------	-------

Gene Description	ubiquitin specific peptidase 16
------------------	---------------------------------

Omim ID	604735
---------	------------------------

Gene Ontology	Hyperlink
---------------	---------------------------

Gene Summary	This gene encodes a deubiquitinating enzyme that is phosphorylated at the onset of mitosis and then dephosphorylated at the metaphase/anaphase transition. It can deubiquitinate H2A, one of two major ubiquitinated proteins of chromatin, in vitro and a mutant form of the protein was shown to block cell division. Alternate transcriptional splice variants, encoding different isoforms, have been characterized. [provided by RefSeq]
--------------	---

Other Designations	OTTHUMP00000096468 deubiquitinating enzyme 16 ubiquitin carboxyl-terminal hydrolase 16 ubiquitin specific protease 16 ubiquitin thiolesterase 16 ubiquitin-specific processing protease 16
--------------------	--

Publication Reference

- [Human and mouse proteases: a comparative genomic approach.](#)

Puente XS, Sanchez LM, Overall CM, Lopez-Otin C.

Nature Reviews. Genetics 2003 Jul; 4(7):544.

- [A mutant deubiquitinating enzyme \(Ubp-M\) associates with mitotic chromosomes and blocks cell division.](#)

Cai SY, Babbitt RW, Marchesi VT.

PNAS 1999 Mar; 96(6):2828.

- [Deubiquitinating enzymes: a new class of biological regulators.](#)

D'Andrea A, Pellman D.

Critical Reviews in Biochemistry and Molecular Biology 1998 Jan; 33(5):337.