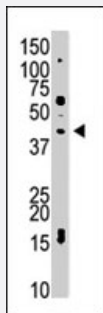


# USP12 polyclonal antibody

Catalog # PAB4195

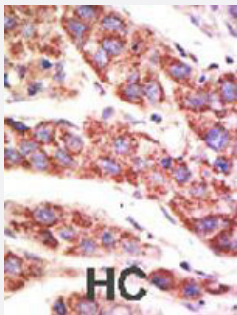
Size 400 uL

## Applications



### Western Blot (Tissue lysate)

The USP12 polyclonal antibody (Cat # PAB4195) is used in Western blot to detect USP12 in mouse kidney tissue lysate .



### Immunohistochemistry (Formalin/PFA-fixed paraffin-embedded sections)

Formalin-fixed and paraffin-embedded human hepatocellular carcinoma tissue reacted with USP12 polyclonal antibody (Cat # PAB4195) , which was peroxidase-conjugated to the secondary antibody, followed by AEC staining . This data demonstrates the use of this antibody for immunohistochemistry; clinical relevance has not been evaluated . HC = hepatocarcinoma .

## Specification

<b>Product Description</b>	Rabbit polyclonal antibody raised against synthetic peptide of USP12.
<b>Immunogen</b>	A synthetic peptide (conjugated with KLH) corresponding to N-terminus of human USP12.
<b>Host</b>	Rabbit
<b>Reactivity</b>	Human, Mouse
<b>Form</b>	Liquid
<b>Purification</b>	Protein G purification

<b>Recommend Usage</b>	ELISA (1:1000) Western Blot (1:100-500) Immunohistochemistry (1:50-100) The optimal working dilution should be determined by the end user.
<b>Storage Buffer</b>	In PBS (0.09% sodium azide)
<b>Storage Instruction</b>	Store at 4°C. For long term storage store at -20°C. Aliquot to avoid repeated freezing and thawing.
<b>Note</b>	This product contains sodium azide: a POISONOUS AND HAZARDOUS SUBSTANCE which should be handled by trained staff only.

## Applications

- Western Blot (Tissue lysate)

The USP12 polyclonal antibody (Cat # PAB4195) is used in Western blot to detect USP12 in mouse kidney tissue lysate .

- Immunohistochemistry (Formalin/PFA-fixed paraffin-embedded sections)

Formalin-fixed and paraffin-embedded human hepatocellular carcinoma tissue reacted with USP12 polyclonal antibody (Cat # PAB4195) , which was peroxidase-conjugated to the secondary antibody, followed by AEC staining . This data demonstrates the use of this antibody for immunohistochemistry; clinical relevance has not been evaluated . HC = hepatocarcinoma .

- Enzyme-linked Immunoabsorbent Assay

## Gene Info — USP12

<b>Entrez GeneID</b>	<a href="#">219333</a>
<b>Protein Accession#</b>	<a href="#">UB12_HUMAN</a>
<b>Gene Name</b>	USP12
<b>Gene Alias</b>	USP12L1
<b>Gene Description</b>	ubiquitin specific peptidase 12
<b>Gene Ontology</b>	<a href="#">Hyperlink</a>
<b>Other Designations</b>	OTTHUMP00000042337 ubiquitin specific protease 12 like 1 ubiquitin-specific protease 12-like 1

## Publication Reference

- [An evolutionarily conserved gene on human chromosome 5q33-q34, UBH1, encodes a novel deubiquitinating enzyme.](#)

Hansen-Hagge TE, Janssen JW, Hameister H, Papa FR, Zechner U, Seriu T, Jauch A, Becke D, Hochstrasser M, Bartram CR.  
Genomics 1998 May; 49(3):411.