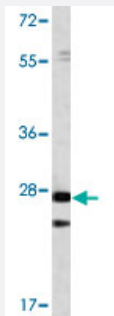


# PTP4A1 polyclonal antibody

Catalog # PAB4121      Size 400 uL

## Applications



### Western Blot (Tissue lysate)

Western blot analysis of mouse spleen tissue lysate (35 ug/lane) with PTP4A1 polyclonal antibody (Cat # PAB4121).

## Specification

<b>Product Description</b>	Rabbit polyclonal antibody raised against full length recombinant PTP4A1.
<b>Immunogen</b>	Recombinant protein corresponding to full length human PTP4A1.
<b>Host</b>	Rabbit
<b>Reactivity</b>	Human, Mouse
<b>Form</b>	Liquid
<b>Purification</b>	Protein G purification
<b>Recommend Usage</b>	ELISA (1:1000) Western Blot (1:100-500) The optimal working dilution should be determined by the end user.
<b>Storage Buffer</b>	In PBS (0.09% sodium azide)
<b>Storage Instruction</b>	Store at 4°C. For long term storage store at -20°C. Aliquot to avoid repeated freezing and thawing.
<b>Note</b>	This product contains sodium azide: a POISONOUS AND HAZARDOUS SUBSTANCE which should be handled by trained staff only.

## Applications

- Western Blot (Tissue lysate)

Western blot analysis of mouse spleen tissue lysate (35 ug/lane) with PTP4A1 polyclonal antibody (Cat # PAB4121).

- Enzyme-linked Immunoabsorbent Assay

## Gene Info — PTP4A1

Entrez GeneID [7803](#)

Protein Accession# [NP\\_003454.1](#)

Gene Name PTP4A1

Gene Alias DKFZp779M0721, HH72, PRL-1, PRL1, PTP(CAAX1), PTPCAAX1

Gene Description protein tyrosine phosphatase type IVA, member 1

Omim ID [601585](#)

Gene Ontology [Hyperlink](#)

**Gene Summary** The protein encoded by this gene belongs to a small class of prenylated protein tyrosine phosphatases (PTPs), which contains a PTP domain and a characteristic C-terminal prenylation motif. PTPs are cell signaling molecules that play regulatory roles in a variety of cellular processes. This tyrosine phosphatase is a nuclear protein, but may primarily associate with plasma membrane. The surface membrane association of this protein depends on its C-terminal prenylation. Overexpression of this gene in mammalian cells conferred a transformed phenotype, which implicated its role in the tumorigenesis. Studies in rat suggested that this gene may be an immediate-early gene in mitogen-stimulated cells. [provided by RefSeq]

**Other Designations** OTTHUMP00000016675|Protein tyrosine phosphatase IVA1|protein tyrosine phosphatase type I VA protein 1

## Publication Reference

- [Trimeric structure of PRL-1 phosphatase reveals an active enzyme conformation and regulation mechanisms.](#)

Jeong DG, Kim SJ, Kim JH, Son JH, Park MR, Lim SM, Yoon TS, Ryu SE.

Journal of Molecular Biology 2005 Jan; 345(2):401.

- [Enhanced cell cycle progression and down regulation of p21\(Cip1/Waf1\) by PRL tyrosine phosphatases.](#)

Werner SR, Lee PA, DeCamp MW, Crowell DN, Randall SK, Crowell PL.

Cancer Letters 2003 Dec; 202(2):201.

Application: WB, Human, PRL-1 cells

- [The tyrosine phosphatase PRL-1 localizes to the endoplasmic reticulum and the mitotic spindle and is required for normal mitosis.](#)

Wang J, Kirby CE, Herbst R.

The Journal of Biological Chemistry 2002 Nov; 277(48):46659.

Application: IF, WB-Ce, Human, HeLa cells

## Disease

- [Genetic Predisposition to Disease](#)
- [Lymphoma](#)
- [Ovarian Neoplasms](#)