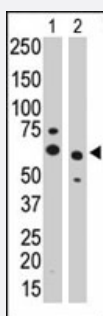


PPM1G polyclonal antibody

Catalog # PAB4114

Size 400 uL

Applications



Western Blot

The PPM1G polyclonal antibody (Cat # PAB4114) is used in Western blot to detect PPM1G in CHO cell lysate (Lane 1) and mouse heart tissue lysate (Lane 2) .

Specification

Product Description	Rabbit polyclonal antibody raised against synthetic peptide of PPM1G.
Immunogen	A synthetic peptide (conjugated with KLH) corresponding to internal region of human PPM1G.
Host	Rabbit
Reactivity	Human, Mouse
Form	Liquid
Purification	Protein G purification
Recommend Usage	ELISA (1:1000) Western Blot (1:100-500) The optimal working dilution should be determined by the end user.
Storage Buffer	In PBS (0.09% sodium azide)
Storage Instruction	Store at 4°C. For long term storage store at -20°C. Aliquot to avoid repeated freezing and thawing.
Note	This product contains sodium azide: a POISONOUS AND HAZARDOUS SUBSTANCE which should be handled by trained staff only.

Applications

- Western Blot

The PPM1G polyclonal antibody (Cat # PAB4114) is used in Western blot to detect PPM1G in CHO cell lysate (Lane 1) and mouse heart tissue lysate (Lane 2) .

- Enzyme-linked Immunoabsorbent Assay

Gene Info — PPM1G

Entrez GeneID	5496
---------------	----------------------

Protein Accession#	O15355
--------------------	------------------------

Gene Name	PPM1G
-----------	-------

Gene Alias	MGC1675, MGC2870, PP2CG, PP2CGAMMA, PPP2CG
------------	--

Gene Description	protein phosphatase 1G (formerly 2C), magnesium-dependent, gamma isoform
------------------	--

Omim ID	605119
---------	------------------------

Gene Ontology	Hyperlink
---------------	---------------------------

Gene Summary	The protein encoded by this gene is a member of the PP2C family of Ser/Thr protein phosphatases. PP2C family members are known to be negative regulators of cell stress response pathways. This phosphatase is found to be responsible for the dephosphorylation of Pre-mRNA splicing factors, which is important for the formation of functional spliceosome. Studies of a similar gene in mice suggested a role of this phosphatase in regulating cell cycle progression. Alternatively spliced transcripts encoding the same protein have been described. [provided by RefSeq]
--------------	---

Other Designations	OTTHUMP00000123426 PP2C, gamma protein phosphatase 1C protein phosphatase 1G protein phosphatase 2, catalytic subunit, gamma isoform protein phosphatase 2C gamma isoform protein phosphatase magnesium-dependent 1 gamma
--------------------	---

Disease

- [Alcoholism](#)

- [Conduct Disorder](#)