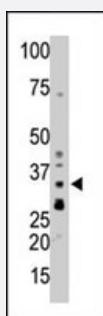


PPP1CB polyclonal antibody

Catalog # PAB4113

Size 400 uL

Applications



Western Blot (Tissue lysate)

The PPP1CB polyclonal antibody (Cat # PAB4113) is used in Western blot to detect PPP1CB in mouse brain tissue lysate.

Specification

Product Description	Rabbit polyclonal antibody raised against synthetic peptide of PPP1CB.
Immunogen	A synthetic peptide (conjugated with KLH) corresponding to C-terminus of human PPP1CB.
Host	Rabbit
Reactivity	Human
Form	Liquid
Purification	Protein G purification
Recommend Usage	ELISA (1:1000) Western Blot (1:100-500) The optimal working dilution should be determined by the end user.
Storage Buffer	In PBS (0.09% sodium azide)
Storage Instruction	Store at 4°C. For long term storage store at -20°C. Aliquot to avoid repeated freezing and thawing.
Note	This product contains sodium azide: a POISONOUS AND HAZARDOUS SUBSTANCE which should be handled by trained staff only.

Applications

- Western Blot (Tissue lysate)

The PPP1CB polyclonal antibody (Cat # PAB4113) is used in Western blot to detect PPP1CB in mouse brain tissue lysate.

- Enzyme-linked Immunoabsorbent Assay

Gene Info — PPP1CB

Entrez GeneID [5500](#)

Protein Accession# [P62140](#)

Gene Name PPP1CB

Gene Alias MGC3672, PP-1B, PPP1CD

Gene Description protein phosphatase 1, catalytic subunit, beta isoform

Omim ID [600590](#)

Gene Ontology [Hyperlink](#)

Gene Summary The protein encoded by this gene is one of the three catalytic subunits of protein phosphatase 1 (PP1). PP1 is a serine/threonine specific protein phosphatase known to be involved in the regulation of a variety of cellular processes, such as cell division, glycogen metabolism, muscle contractility, protein synthesis, and HIV-1 viral transcription. Mouse studies suggest that PP1 functions as a suppressor of learning and memory. Two alternatively spliced transcript variants encoding distinct isoforms have been observed. [provided by RefSeq]

Other Designations protein phosphatase 1, catalytic subunit, beta|protein phosphatase 1, catalytic subunit, delta isoform|protein phosphatase 1-beta|protein phosphatase 1-delta|serine/threonine protein phosphatase PP1-beta catalytic subunit

Pathway

- [Focal adhesion](#)
- [Insulin signaling pathway](#)
- [Long-term potentiation](#)
- [Regulation of actin cytoskeleton](#)

- [Vascular smooth muscle contraction](#)

Disease

- [Breast cancer](#)
- [Breast Neoplasms](#)
- [Genetic Predisposition to Disease](#)