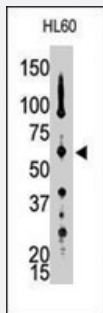


PTPN5 polyclonal antibody

Catalog # PAB4108

Size 400 uL

Applications



Western Blot (Cell lysate)

Western blot analysis of PTPN5 polyclonal antibody (Cat # PAB4108) in HL-60 cell lysate (35 ug/lane). PTPN5 (arrow) was detected using the purified polyclonal antibody.



Immunohistochemistry (Formalin/PFA-fixed paraffin-embedded sections)

Formalin-fixed and paraffin-embedded human brain tissue reacted with PTPN5 polyclonal antibody (Cat # PAB4108), which was peroxidase-conjugated to the secondary antibody, followed by DAB staining.

This data demonstrates the use of this antibody for immunohistochemistry; clinical relevance has not been evaluated.

Specification

| | |
|----------------------------|---|
| Product Description | Rabbit polyclonal antibody raised against synthetic peptide of PTPN5. |
| Immunogen | A synthetic peptide (conjugated with KLH) corresponding to N-terminus of human PTPN5. |
| Host | Rabbit |
| Reactivity | Human, Mouse |
| Form | Liquid |
| Purification | Protein G purification |

| | |
|----------------------------|--|
| Recommend Usage | ELISA (1:1000) Western Blot (1:100-500) Immunohistochemistry (1:10-50) The optimal working dilution should be determined by the end user. |
| Storage Buffer | In PBS (0.09% sodium azide) |
| Storage Instruction | Store at 4°C. For long term storage store at -20°C. Aliquot to avoid repeated freezing and thawing. |
| Note | This product contains sodium azide: a POISONOUS AND HAZARDOUS SUBSTANCE which should be handled by trained staff only. |

Applications

- Western Blot (Cell lysate)

Western blot analysis of PTPN5 polyclonal antibody (Cat # PAB4108) in HL-60 cell lysate (35 ug/lane). PTPN5 (arrow) was detected using the purified polyclonal antibody.

- Immunohistochemistry (Formalin/PFA-fixed paraffin-embedded sections)

Formalin-fixed and paraffin-embedded human brain tissue reacted with PTPN5 polyclonal antibody (Cat # PAB4108), which was peroxidase-conjugated to the secondary antibody, followed by DAB staining.
This data demonstrates the use of this antibody for immunohistochemistry; clinical relevance has not been evaluated.

- Enzyme-linked Immunoabsorbent Assay

Gene Info — PTPN5

| | |
|---------------------------|---|
| Entrez GeneID | 84867 |
| Protein Accession# | P54829 |
| Gene Name | PTPN5 |
| Gene Alias | FLJ14427, PTPSTEP, STEP |
| Gene Description | protein tyrosine phosphatase, non-receptor type 5 (striatum-enriched) |
| Omim ID | 176879 |
| Gene Ontology | Hyperlink |
| Gene Summary | O |
| Other Designations | OTTHUMP00000165938 OTTHUMP00000165958 |

Publication Reference

- [Complete sequencing and characterization of 21,243 full-length human cDNAs.](#)

Ota T, Suzuki Y, Nishikawa T, Otsuki T, Sugiyama T, Irie R, Wakamatsu A, Hayashi K, Sato H, Nagai K, Kimura K, Makita H, Sekine M, Obayashi M, Nishi T, Shibahara T, Tanaka T, Ishii S, Yamamoto J, Saito K, Kawai Y, Isono Y, Nakamura Y, Nagahari K, Murakami K, Yasuda T, Iwayanagi T, Wagatsuma M, Shiratori A, Sudo H, Hosoiri T, Kaku Y, Kodaira H, Kondo H, Sugawara M, Takahashi M, Kanda K, Yokoi T, Furuya T, Kikkawa E, Omura Y, Abe K, Kamihara K, Katsuta N, Sato K, Tanikawa M, Yamazaki M, Ninomiya K

Nature Genetics 2003 Dec; 36(1):40.

- [Molecular cloning of the human homolog of a striatum-enriched phosphatase \(STEP\) gene and chromosomal mapping of the human and murine loci.](#)

Li X, Luna J, Lombroso PJ, Francke U.

Genomics 1995 Aug; 28(3):442.

Application: WB-Ce, WB-Tr, Human, Mammalian cells

Pathway

- [MAPK signaling pathway](#)

Disease

- [Cell Transformation](#)
- [Colorectal Neoplasms](#)
- [Kidney Failure](#)
- [Microsatellite Instability](#)
- [Tobacco Use Disorder](#)