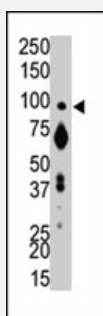


PTPRA polyclonal antibody

Catalog # PAB4090

Size 400 uL

Applications



Western Blot (Tissue lysate)

The PTPRA polyclonal antibody (Cat # PAB4090) is used in Western blot to detect PTPRA in mouse brain tissue lysate.

Specification

Product Description	Rabbit polyclonal antibody raised against synthetic peptide of PTPRA.
Immunogen	A synthetic peptide (conjugated with KLH) corresponding to N-terminus of human PTPRA.
Host	Rabbit
Reactivity	Human, Mouse
Form	Liquid
Purification	Protein G purification
Recommend Usage	ELISA (1:1000) Western Blot (1:100-500) The optimal working dilution should be determined by the end user.
Storage Buffer	In PBS (0.09% sodium azide)
Storage Instruction	Store at 4°C. For long term storage store at -20°C. Aliquot to avoid repeated freezing and thawing.
Note	This product contains sodium azide: a POISONOUS AND HAZARDOUS SUBSTANCE which should be handled by trained staff only.

Applications

- Western Blot (Tissue lysate)

The PTPRA polyclonal antibody (Cat # PAB4090) is used in Western blot to detect PTPRA in mouse brain tissue lysate.

- Enzyme-linked Immunoabsorbent Assay

Gene Info — PTPRA

Entrez GeneID [5786](#)

Protein Accession# [P18433](#)

Gene Name PTPRA

Gene Alias HEPTP, HLPR, HPTPA, HPTPalpha, LRP, PTPA, PTPRL2, R-PTP-alpha, RPTPA

Gene Description protein tyrosine phosphatase, receptor type, A

Omim ID [176884](#)

Gene Ontology [Hyperlink](#)

Gene Summary The protein encoded by this gene is a member of the protein tyrosine phosphatase (PTP) family. PTPs are known to be signaling molecules that regulate a variety of cellular processes including cell growth, differentiation, mitotic cycle, and oncogenic transformation. This PTP contains an extra cellular domain, a single transmembrane segment and two tandem intracytoplasmic catalytic domains, and thus represents a receptor-type PTP. This PTP has been shown to dephosphorylate and activate Src family tyrosine kinases, and is implicated in the regulation of integrin signaling, cell adhesion and proliferation. Three alternatively spliced variants of this gene, which encode two distinct isoforms, have been reported. [provided by RefSeq]

Other Designations Leukocyte common antigen-related peptide (protein tyrosine phosphate)|OTTHUMP00000030063|OTTHUMP00000030064|OTTHUMP00000030065|PTPLCA-related phosphatase|PTPase-alpha|protein tyrosine phosphatase, receptor type, alpha polypeptide|tyrosine phosphatase alph

Publication Reference

- [The DNA sequence and comparative analysis of human chromosome 20.](#)

Deloukas P, Matthews LH, Ashurst J, Burton J, Gilbert JG, Jones M, Stavrides G, Almeida JP, Babbage AK, Bagguley CL, Bailey J, Barlow KF, Bates KN, Beard LM, Beare DM, Beasley OP, Bird CP, Blakey SE, Bridgeman AM, Brown AJ, Buck D, Burrill W, Butler AP, Carder C, Carter NP, Chapman JC, Clamp M, Clark G, Clark LN, Clark SY, Clee CM, Clegg S, Cobley VE, Collier RE, Connor R, Corby NR, Coulson A, Coville GJ, Deadman R, Dharni P, Dunn M, Ellington AG, Frankland JA, Fraser A, French L, Garner P, Grafh

Nature 2001 Dec; 414(6866):865.

- [Structural diversity and evolution of human receptor-like protein tyrosine phosphatases.](#)

Krueger NX, Streuli M, Saito H.

The EMBO Journal 1990 Oct; 9(10):3241.

- [Cloning of three human tyrosine phosphatases reveals a multigene family of receptor-linked protein-tyrosine-phosphatases expressed in brain.](#)

Kaplan R, Morse B, Huebner K, Croce C, Howk R, Ravera M, Ricca G, Jaye M, Schlessinger J.

PNAS 1990 Sep; 87(18):7000.

Disease

- [Alzheimer disease](#)
- [Atherosclerosis](#)
- [Coronary Disease](#)
- [Genetic Predisposition to Disease](#)
- [Kidney Failure](#)
- [Multiple Sclerosis](#)