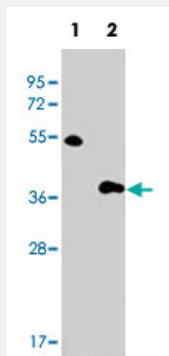


MLST8 polyclonal antibody

Catalog # PAB4075

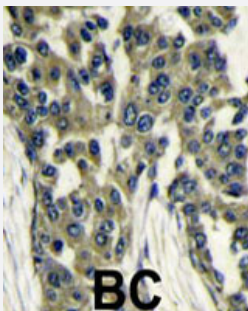
Size 400 uL

Applications



Western Blot (Transfected lysate)

Western blot analysis of MLST8 polyclonal antibody (Cat # PAB4075) (arrow). 293 cell lysate (2 ug/lane) either nontransfected (Lane 1) or transiently transfected with the MLST8 gene (Lane 2) (Origene Technologies).



Immunohistochemistry (Formalin/PFA-fixed paraffin-embedded sections)

Formalin-fixed and paraffin-embedded human breast carcinoma reacted with MLST8 polyclonal antibody (Cat # PAB4075), which was peroxidase-conjugated to the secondary antibody, followed by DAB staining. This data demonstrates the use of this antibody for immunohistochemistry; clinical relevance has not been evaluated.

Specification

Product Description	Rabbit polyclonal antibody raised against synthetic peptide of GBL.
Immunogen	A synthetic peptide (conjugated with KLH) corresponding to internal region of human GBL.
Host	Rabbit
Reactivity	Human
Form	Liquid
Purification	Protein A purification

Recommend Usage	ELISA (1:1000) Western Blot (1:250-500) Immunohistochemistry (1:50-100) The optimal working dilution should be determined by the end user.
Storage Buffer	In PBS (0.09% sodium azide)
Storage Instruction	Store at 4°C. For long term storage store at -20°C. Aliquot to avoid repeated freezing and thawing.
Note	This product contains sodium azide: a POISONOUS AND HAZARDOUS SUBSTANCE which should be handled by trained staff only.

Applications

- Western Blot (Transfected lysate)

Western blot analysis of MLST8 polyclonal antibody (Cat # PAB4075) (arrow). 293 cell lysate (2 ug/lane) either nontransfected (Lane 1) or transiently transfected with the MLST8 gene (Lane 2) (Origene Technologies).

- Immunohistochemistry (Formalin/PFA-fixed paraffin-embedded sections)

Formalin-fixed and paraffin-embedded human breast carcinoma reacted with MLST8 polyclonal antibody (Cat # PAB4075), which was peroxidase-conjugated to the secondary antibody, followed by DAB staining.
This data demonstrates the use of this antibody for immunohistochemistry; clinical relevance has not been evaluated.

- Enzyme-linked Immunoabsorbent Assay

Gene Info — MLST8

Entrez GeneID	64223
Protein Accession#	NP_071767;Q9BVC4
Gene Name	MLST8
Gene Alias	GBL, LST8, POP3, WAT1, GbetaL
Gene Description	MTOR associated protein, LST8 homolog (S. cerevisiae)
Gene Ontology	Hyperlink
Gene Summary	OTTHUMP00000159046
Other Designations	OTTHUMP00000159046

Publication Reference

- [Complete sequencing and characterization of 21,243 full-length human cDNAs.](#)

Ota T, Suzuki Y, Nishikawa T, Otsuki T, Sugiyama T, Irie R, Wakamatsu A, Hayashi K, Sato H, Nagai K, Kimura K, Makita H, Sekine M, Obayashi M, Nishi T, Shibahara T, Tanaka T, Ishii S, Yamamoto J, Saito K, Kawai Y, Isono Y, Nakamura Y, Nagahari K, Murakami K, Yasuda T, Iwayanagi T, Wagatsuma M, Shiratori A, Sudo H, Hosoiri T, Kaku Y, Kodaira H, Kondo H, Sugawara M, Takahashi M, Kanda K, Yokoi T, Furuya T, Kikkawa E, Omura Y, Abe K, Kamihara K, Katsuta N, Sato K, Tanikawa M, Yamazaki M, Ninomiya K

Nature Genetics 2003 Dec; 36(1):40.

Pathway

- [mTOR signaling pathway](#)