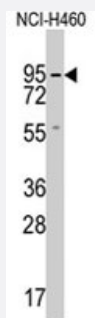


# GUCY1A2 polyclonal antibody

Catalog # PAB4064

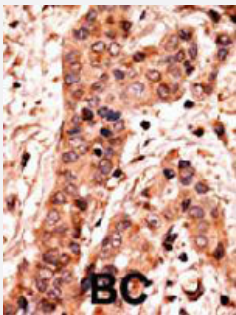
Size 400 uL

## Applications



### Western Blot (Cell lysate)

Western blot analysis of GUCY1A2 polyclonal antibody (Cat # PAB4064) in NCI-H460 cell lysate (35 ug/lane). GUCY1A2 (arrow) was detected using the purified polyclonal antibody.



### Immunohistochemistry (Formalin/PFA-fixed paraffin-embedded sections)

Formalin-fixed and paraffin-embedded human breast cancer tissue reacted with GUCY1A2 polyclonal antibody (Cat # PAB4064), which was peroxidase-conjugated to the secondary antibody, followed by AEC staining. This data demonstrates the use of this antibody for immunohistochemistry; clinical relevance has not been evaluated.

## Specification

<b>Product Description</b>	Rabbit polyclonal antibody raised against synthetic peptide of GUCY1A2.
<b>Immunogen</b>	A synthetic peptide (conjugated with KLH) corresponding to C-terminus of human GUCY1A2.
<b>Host</b>	Rabbit
<b>Reactivity</b>	Human
<b>Form</b>	Liquid
<b>Purification</b>	Protein G purification

<b>Recommend Usage</b>	ELISA (1:1000) Western Blot (1:50-200) Immunohistochemistry (1:50-100) The optimal working dilution should be determined by the end user.
<b>Storage Buffer</b>	In PBS (0.09% sodium azide)
<b>Storage Instruction</b>	Store at 4°C. For long term storage store at -20°C. Aliquot to avoid repeated freezing and thawing.
<b>Note</b>	This product contains sodium azide: a POISONOUS AND HAZARDOUS SUBSTANCE which should be handled by trained staff only.

## Applications

- Western Blot (Cell lysate)

Western blot analysis of GUCY1A2 polyclonal antibody (Cat # PAB4064) in NCI-H460 cell lysate (35 ug/lane). GUCY1A2 (arrow) was detected using the purified polyclonal antibody.

- Immunohistochemistry (Formalin/PFA-fixed paraffin-embedded sections)

Formalin-fixed and paraffin-embedded human breast cancer tissue reacted with GUCY1A2 polyclonal antibody (Cat # PAB4064), which was peroxidase-conjugated to the secondary antibody, followed by AEC staining. This data demonstrates the use of this antibody for immunohistochemistry; clinical relevance has not been evaluated.

- Enzyme-linked Immunoabsorbent Assay

## Gene Info — GUCY1A2

<b>Entrez GeneID</b>	<a href="#">2977</a>
<b>Protein Accession#</b>	<a href="#">NP_000846</a>
<b>Gene Name</b>	GUCY1A2
<b>Gene Alias</b>	GC-SA2, GUC1A2
<b>Gene Description</b>	guanylate cyclase 1, soluble, alpha 2
<b>Omim ID</b>	<a href="#">601244</a>
<b>Gene Ontology</b>	<a href="#">Hyperlink</a>

## Gene Summary

Soluble guanylyl (or guanylate) cyclases are heterodimeric enzymes consisting of an alpha subunit, such as alpha-2 (GUCY1A2), and a beta subunit, typically beta-1 (GUCY1B3; MIM 139397), which are activated by nitric oxide (NO) and which catalyze conversion of GTP to 3-prime, 5-prime-cyclic GMP and pyrophosphate (Harteneck et al., 1991 [PubMed 1683630]).[supplied by OMIM]

## Other Designations

-

## Publication Reference

- [Expression of nNOS and soluble guanylate cyclase in schizophrenic brain.](#)

Baba H, Suzuki T, Arai H, Emson PC.

Neuroreport 2004 Mar; 15(4):677.

- [On the activation of soluble guanylyl cyclase by nitric oxide.](#)

Bellamy TC, Wood J, Garthwaite J.

PNAS 2002 Jan; 99(1):507.

- [Guanylyl cyclase/PSD-95 interaction: targeting of the nitric oxide-sensitive alpha2beta1 guanylyl cyclase to synaptic membranes.](#)

Russwurm M, Wittau N, Koesling D.

The Journal of Biological Chemistry 2001 Nov; 276(48):44647.

Application: WB-Ti, Rat, Rat brains, Synaptosomes

## Pathway

- [Gap junction](#)
- [Long-term depression](#)
- [Purine metabolism](#)
- [Vascular smooth muscle contraction](#)

## Disease

- [Celiac Disease](#)
- [Genetic Predisposition to Disease](#)

- [Tobacco Use Disorder](#)