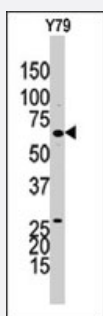


GUCY1B3 polyclonal antibody

Catalog # PAB4059

Size 400 uL

Applications



Western Blot (Cell lysate)

Western blot analysis of GUCY1B3 polyclonal antibody (Cat # PAB4059) in Y-79 cell lysate. GUCY1B3 (arrow) was detected using the purified polyclonal antibody.

Specification

Product Description	Rabbit polyclonal antibody raised against synthetic peptide of GUCY1B3.
Immunogen	A synthetic peptide (conjugated with KLH) corresponding to C-terminus of human GUCY1B3.
Host	Rabbit
Reactivity	Human
Form	Liquid
Purification	Protein G purification
Recommend Usage	ELISA (1:1000) Western Blot (1:100-500) The optimal working dilution should be determined by the end user.
Storage Buffer	In PBS (0.09% sodium azide)
Storage Instruction	Store at 4°C. For long term storage store at -20°C. Aliquot to avoid repeated freezing and thawing.
Note	This product contains sodium azide: a POISONOUS AND HAZARDOUS SUBSTANCE which should be handled by trained staff only.

Applications

- Western Blot (Cell lysate)

Western blot analysis of GUCY1B3 polyclonal antibody (Cat # PAB4059) in Y-79 cell lysate. GUCY1B3 (arrow) was detected using the purified polyclonal antibody.

- Enzyme-linked Immunoabsorbent Assay

Gene Info — GUCY1B3

Entrez GeneID	2983
Protein Accession#	NP_000848
Gene Name	GUCY1B3
Gene Alias	GC-S-beta-1, GC-SB3, GUC1B3, GUCB3, GUCSB3, GUCY1B1
Gene Description	guanylate cyclase 1, soluble, beta 3
Omim ID	139397
Gene Ontology	Hyperlink
Gene Summary	Soluble guanylate cyclase (sGC), a heterodimeric protein consisting of an alpha subunit and a beta subunit, typically GUCY1B3, catalyzes conversion of GTP to the second messenger cGMP and functions as the main receptor for nitric oxide (NO) and nitrovasodilator drugs (Zabel et al., 1998 [PubMed 9742212]).[supplied by OMIM]
Other Designations	-

Publication Reference

- [Guanylyl cyclase/PSD-95 interaction: targeting of the nitric oxide-sensitive alpha2beta1 guanylyl cyclase to synaptic membranes.](#)

Russwurm M, Wittau N, Koesling D.

The Journal of Biological Chemistry 2001 Nov; 276(48):44647.

Application: WB-Ti, Rat, Rat brains, Synaptosomes

- [Guanylyl cyclases and signaling by cyclic GMP.](#)

Lucas KA, Pitari GM, Kazerounian S, Ruiz-Stewart I, Park J, Schulz S, Chepenik KP, Waldman SA.

Pharmacological Reviews 2000 Sep; 52(3):375.

- [cGMP accumulation and gene expression of soluble guanylate cyclase in human vascular tissue.](#)

Papapetropoulos A, Cziraki A, Rubin JW, Stone CD, Catravas JD.

Journal of Cellular Physiology 1996 May; 167(2):213.

Pathway

- [Gap junction](#)
- [Long-term depression](#)
- [Purine metabolism](#)
- [Vascular smooth muscle contraction](#)