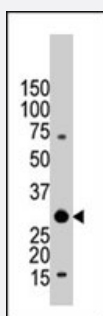


YWHAB polyclonal antibody

Catalog # PAB4033

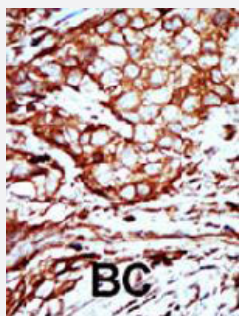
Size 400 uL

Applications



Western Blot (Cell lysate)

The YWHAB polyclonal antibody (Cat # PAB4033) is used in Western blot to detect YWHAB in Jurkat cell lysate.



Immunohistochemistry (Formalin/PFA-fixed paraffin-embedded sections)

Formalin-fixed and paraffin-embedded human breast cancer tissue reacted with YWHAB polyclonal antibody (Cat # PAB4033), which was peroxidase-conjugated to the secondary antibody, followed by AEC staining.

This data demonstrates the use of this antibody for immunohistochemistry; clinical relevance has not been evaluated.

Specification

Product Description	Rabbit polyclonal antibody raised against synthetic peptide of YWHAB.
Immunogen	A synthetic peptide (conjugated with KLH) corresponding to C-terminus of human YWHAB.
Host	Rabbit
Reactivity	Human
Form	Liquid
Purification	Protein G purification

Recommend Usage	ELISA (1:1000) Western Blot (1:100-500) Immunohistochemistry (1:50-100) The optimal working dilution should be determined by the end user.
Storage Buffer	In PBS (0.09% sodium azide)
Storage Instruction	Store at 4°C. For long term storage store at -20°C. Aliquot to avoid repeated freezing and thawing.
Note	This product contains sodium azide: a POISONOUS AND HAZARDOUS SUBSTANCE which should be handled by trained staff only.

Applications

- Western Blot (Cell lysate)

The YWHAB polyclonal antibody (Cat # PAB4033) is used in Western blot to detect YWHAB in Jurkat cell lysate.

- Immunohistochemistry (Formalin/PFA-fixed paraffin-embedded sections)

Formalin-fixed and paraffin-embedded human breast cancer tissue reacted with YWHAB polyclonal antibody (Cat # PAB4033), which was peroxidase-conjugated to the secondary antibody, followed by AEC staining.

This data demonstrates the use of this antibody for immunohistochemistry; clinical relevance has not been evaluated.

- Enzyme-linked Immunoabsorbent Assay

Gene Info — YWHAB

Entrez GeneID	7529
Protein Accession#	P31946
Gene Name	YWHAB
Gene Alias	GW128, HS1, KCIP-1
Gene Description	tyrosine 3-monooxygenase/tryptophan 5-monooxygenase activation protein, beta polypeptide
Omim ID	601289
Gene Ontology	Hyperlink

Gene Summary

This gene encodes a protein belonging to the 14-3-3 family of proteins, members of which mediate signal transduction by binding to phosphoserine-containing proteins. This highly conserved protein family is found in both plants and mammals. The encoded protein has been shown to interact with RAF1 and CDC25 phosphatases, suggesting that it may play a role in linking mitogenic signaling and the cell cycle machinery. Two transcript variants, which encode the same protein, have been identified for this gene. [provided by RefSeq]

Other Designations

14-3-3 protein beta/alpha|OTTHUMP00000031075|OTTHUMP00000031076|brain protein 14-3-3, beta isoform|protein 1054|protein kinase C inhibitor protein-1

Publication Reference

- [Immunoexpression of 14-3-3 proteins in glial cytoplasmic inclusions of multiple system atrophy.](#)

Komori T, Ishizawa K, Arai N, Hirose T, Mizutani T, Oda M.

Acta Neuropathologica 2003 Jul; 106(1):66.

Application: IHC-P, Human, Brains from patients with multiple system atrophy

- [14-3-3beta is a p90 ribosomal S6 kinase \(RSK\) isoform 1-binding protein that negatively regulates RSK kinase activity.](#)

Cavet ME, Lehoux S, Berk BC.

The Journal of Biological Chemistry 2003 Mar; 278(20):18376.

- [The p38 and MK2 kinase cascade phosphorylates tuberin, the tuberous sclerosis 2 gene product, and enhances its interaction with 14-3-3.](#)

Li Y, Inoki K, Vacratsis P, Guan KL.

The Journal of Biological Chemistry 2003 Feb; 278(16):13663.

Pathway

- [Cell cycle](#)
- [Neurotrophin signaling pathway](#)

Disease

- [Autistic Disorder](#)