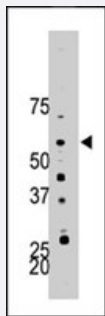


PFKFB4 polyclonal antibody

Catalog # PAB4031

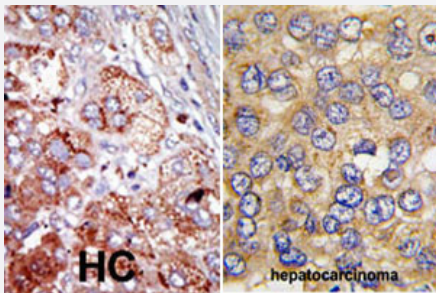
Size 400 uL

Applications



Western Blot (Tissue lysate)

The PFKFB4 polyclonal antibody (Cat # PAB4031) is used in Western blot to detect PFKFB4 in mouse brain tissue lysate.



Immunohistochemistry (Formalin/PFA-fixed paraffin-embedded sections)

Formalin-fixed and paraffin-embedded human hepatocellular carcinoma tissue reacted with PFKFB4 polyclonal antibody (Cat # PAB4031), which was peroxidase-conjugated to the secondary antibody, followed by AEC staining. This data demonstrates the use of this antibody for immunohistochemistry; clinical relevance has not been evaluated.

Specification

Product Description	Rabbit polyclonal antibody raised against synthetic peptide of PFKFB4.
Immunogen	A synthetic peptide (conjugated with KLH) corresponding to internal region of human PFKFB4.
Host	Rabbit
Reactivity	Human, Mouse
Form	Liquid
Purification	Protein G purification

Recommend Usage	ELISA (1:1000) Western Blot (1:100-500) Immunohistochemistry (1:50-100) The optimal working dilution should be determined by the end user.
Storage Buffer	In PBS (0.09% sodium azide)
Storage Instruction	Store at 4°C. For long term storage store at -20°C. Aliquot to avoid repeated freezing and thawing.
Note	This product contains sodium azide: a POISONOUS AND HAZARDOUS SUBSTANCE which should be handled by trained staff only.

Applications

- Western Blot (Tissue lysate)

The PFKFB4 polyclonal antibody (Cat # PAB4031) is used in Western blot to detect PFKFB4 in mouse brain tissue lysate.

- Immunohistochemistry (Formalin/PFA-fixed paraffin-embedded sections)

Formalin-fixed and paraffin-embedded human hepatocellular carcinoma tissue reacted with PFKFB4 polyclonal antibody (Cat # PAB4031), which was peroxidase-conjugated to the secondary antibody, followed by AEC staining.

This data demonstrates the use of this antibody for immunohistochemistry; clinical relevance has not been evaluated.

- Enzyme-linked Immunoabsorbent Assay

Gene Info — PFKFB4

Entrez GeneID	5210
Protein Accession#	Q16877
Gene Name	PFKFB4
Gene Alias	-
Gene Description	6-phosphofructo-2-kinase/fructose-2,6-biphosphatase 4
Omim ID	605320
Gene Ontology	Hyperlink
Gene Summary	O
Other Designations	6-phosphofructo-2-kinase/fructose-2,6-biphosphatase-4 bifunctional enzyme with kinase and biphosphatase activities

Publication Reference

- [Hypoxic activation of PFKFB4 in breast tumor microenvironment shapes metabolic and cellular plasticity to accentuate metastatic competence.](#)

Tao Dai, Spencer R Rosario, Eriko Katsuta, Abhisha Sawant Dessai, Emily J Paterson, Aaron T Novickis, Eduardo Cortes Gomez, Bokai Zhu, Song Liu, Hai Wang, Scott I Abrams, Mukund Seshadri, Wiam Bshara, Subhamoy Dasgupta.

Cell Reports 2022 Dec; 41(10):111756.

Application: WB-Ce, WB-Tr, Human, EMT6, MDA-MB-468 cells

- [Cloning, expression and chromosomal localization of a human testis 6-phosphofructo-2-kinase/fructose-2,6-bisphosphatase gene.](#)

A Manzano, J X Perez, M Nadal, X Estivill, A Lange, R Bartrons.

Gene 1999 Mar; 229(1-2):83.

Application: WB-Tr, Monkey, COS-1 cells

- [Cloning of cDNA encoding for a novel isozyme of fructose 6-phosphate, 2-kinase/fructose 2,6-bisphosphatase from human placenta.](#)

Sakai A, Kato M, Fukasawa M, Ishiguro M, Furuya E, Sakakibara R.

Journal of Biochemistry 1996 Mar; 119(3):506.

Pathway

- [Fructose and mannose metabolism](#)