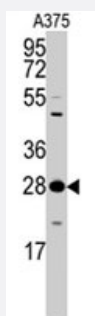


YWHAZ polyclonal antibody

Catalog # PAB4028

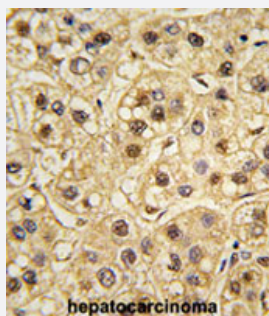
Size 400 uL

Applications



Western Blot (Cell lysate)

Western blot analysis of YWHAZ polyclonal antibody (Cat # PAB4028) in A-375 cell lysate (35 ug/lane). YWHAZ (arrow) was detected using the purified polyclonal antibody (1 : 60 dilution).



Immunohistochemistry (Formalin/PFA-fixed paraffin-embedded sections)

Formalin-fixed and paraffin-embedded human testis reacted with YWHAZ polyclonal antibody (Cat # PAB4028), which was peroxidase-conjugated to the secondary antibody, followed by AEC staining.

This data demonstrates the use of this antibody for immunohistochemistry; clinical relevance has not been evaluated.

Specification

Product Description	Rabbit polyclonal antibody raised against synthetic peptide of YWHAZ.
Immunogen	A synthetic peptide (conjugated with KLH) corresponding to residues surrounding T232 of human YWHAZ.
Host	Rabbit
Reactivity	Human
Form	Liquid
Purification	Protein A purification

Recommend Usage	ELISA (1:1000) Western Blot (1:50-100) Immunohistochemistry (1:10-50) The optimal working dilution should be determined by the end user.
Storage Buffer	In PBS (0.09% sodium azide)
Storage Instruction	Store at 4°C. For long term storage store at -20°C. Aliquot to avoid repeated freezing and thawing.
Note	This product contains sodium azide: a POISONOUS AND HAZARDOUS SUBSTANCE which should be handled by trained staff only.

Applications

- Western Blot (Cell lysate)

Western blot analysis of YWHAZ polyclonal antibody (Cat # PAB4028) in A-375 cell lysate (35 ug/lane). YWHAZ (arrow) was detected using the purified polyclonal antibody (1 : 60 dilution).

- Immunohistochemistry (Formalin/PFA-fixed paraffin-embedded sections)

Formalin-fixed and paraffin-embedded human testis reacted with YWHAZ polyclonal antibody (Cat # PAB4028), which was peroxidase-conjugated to the secondary antibody, followed by AEC staining.
This data demonstrates the use of this antibody for immunohistochemistry; clinical relevance has not been evaluated.

- Enzyme-linked Immunoabsorbent Assay

Gene Info — YWHAZ

Entrez GeneID	7534
Protein Accession#	NP_003397:P63104
Gene Name	YWHAZ
Gene Alias	KCIP-1, MGC111427, MGC126532, MGC138156
Gene Description	tyrosine 3-monooxygenase/tryptophan 5-monooxygenase activation protein, zeta polypeptide
Omim ID	601288
Gene Ontology	Hyperlink

Gene Summary

This gene product belongs to the 14-3-3 family of proteins which mediate signal transduction by binding to phosphoserine-containing proteins. This highly conserved protein family is found in both plants and mammals, and this protein is 99% identical to the mouse, rat and sheep orthologs. The encoded protein interacts with IRS1 protein, suggesting a role in regulating insulin sensitivity. Several transcript variants that differ in the 5' UTR but that encode the same protein have been identified for this gene. [provided by RefSeq]

Other Designations

14-3-3 protein/cytosolic phospholipase A2|14-3-3 zeta|OTTHUMP00000165851|OTTHUMP00000165852|OTTHUMP00000165854|OTTHUMP00000165858|OTTHUMP00000165859|OTTHUMP00000165860|phospholipase A2|protein kinase C inhibitor protein-1|tyrosine 3/tryptophan 5 -monooxygenase

Publication Reference

- [Chibby cooperates with 14-3-3 to regulate beta-catenin subcellular distribution and signaling activity.](#)
Li FQ, Mofunanya A, Harris K, Takemaru K.
Journal of Cellular Biology 2008 Jun; 181(7):1141.
- [Gene-gene interaction between 14-3-3 zeta and butyrylcholinesterase modulates Alzheimer's disease risk.](#)
Mateo I, Llorca J, Infante J, Rodriguez-Rodriguez E, Berciano J, Combarros O.
European Journal of Neurology 2008 Mar; 15(3):219.
- [Down-regulation of 14-3-3zeta suppresses anchorage-independent growth of lung cancer cells through anoikis activation.](#)
Li Z, Zhao J, Du Y, Park HR, Sun SY, Bernal-Mizrachi L, Aitken A, Khuri FR, Fu H.
PNAS 2008 Jan; 105(1):162.

Application: IHC, WB, Human, A-549 cells, Human lung cancer

Pathway

- [Cell cycle](#)
- [Neurotrophin signaling pathway](#)
- [Pathogenic Escherichia coli infection - EHEC](#)

Disease

- [Alzheimer disease](#)

- [Autistic Disorder](#)
- [Genetic Predisposition to Disease](#)
- [Tobacco Use Disorder](#)