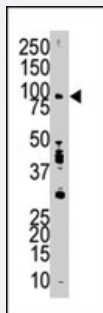


EPS8 polyclonal antibody

Catalog # PAB4022

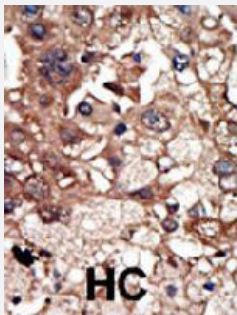
Size 400 uL

Applications



Western Blot (Cell lysate)

The EPS8 polyclonal antibody (Cat # PAB4022) is used in Western blot to detect EPS8 in A-375 cell lysate.



Immunohistochemistry (Formalin/PFA-fixed paraffin-embedded sections)

Formalin-fixed and paraffin-embedded human hepatocellular carcinoma tissue reacted with EPS8 polyclonal antibody (Cat # PAB4022), which was peroxidase-conjugated to the secondary antibody, followed by DAB staining. This data demonstrates the use of this antibody for immunohistochemistry; clinical relevance has not been evaluated.

Specification

Product Description	Rabbit polyclonal antibody raised against synthetic peptide of EPS8.
Immunogen	A synthetic peptide (conjugated with KLH) corresponding to N-terminus of human EPS8.
Host	Rabbit
Reactivity	Human
Form	Liquid
Purification	Protein G purification

Recommend Usage	ELISA (1:1000) Western Blot (1:100-500) Immunohistochemistry (1:50-100) The optimal working dilution should be determined by the end user.
Storage Buffer	In PBS (0.09% sodium azide)
Storage Instruction	Store at 4°C. For long term storage store at -20°C. Aliquot to avoid repeated freezing and thawing.
Note	This product contains sodium azide: a POISONOUS AND HAZARDOUS SUBSTANCE which should be handled by trained staff only.

Applications

- Western Blot (Cell lysate)

The EPS8 polyclonal antibody (Cat # PAB4022) is used in Western blot to detect EPS8 in A-375 cell lysate.

- Immunohistochemistry (Formalin/PFA-fixed paraffin-embedded sections)

Formalin-fixed and paraffin-embedded human hepatocellular carcinoma tissue reacted with EPS8 polyclonal antibody (Cat # PAB4022), which was peroxidase-conjugated to the secondary antibody, followed by DAB staining.

This data demonstrates the use of this antibody for immunohistochemistry; clinical relevance has not been evaluated.

- Enzyme-linked Immunoabsorbent Assay

Gene Info — EPS8

Entrez GeneID	2059
Protein Accession#	Q12929
Gene Name	EPS8
Gene Alias	-
Gene Description	epidermal growth factor receptor pathway substrate 8
Omim ID	600206
Gene Ontology	Hyperlink

Gene Summary

This gene encodes a member of the EPS8 family. This protein contains one PH domain and one SH3 domain. It functions as part of the EGFR pathway, though its exact role has not been determined. Highly similar proteins in other organisms are involved in the transduction of signals from Ras to Rac and growth factor-mediated actin remodeling. Alternate transcriptional splice variants of this gene have been observed but have not been thoroughly characterized. [provided by RefSeq]

Other Designations

-

Disease

- [Disease Progression](#)
- [Disease Susceptibility](#)
- [Genetic Predisposition to Disease](#)
- [HIV Infections](#)
- [Narcolepsy](#)