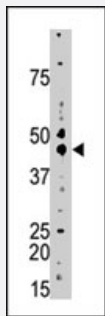


CSNK2A1 polyclonal antibody

Catalog # PAB4015

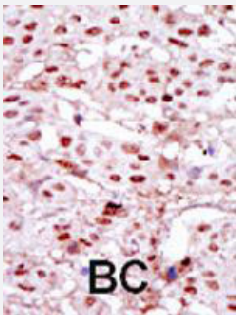
Size 400 uL

Applications



Western Blot (Tissue lysate)

The CSNK2A1 polyclonal antibody (Cat # PAB4015) is used in Western blot to detect CSNK2A1 in mouse brain tissue lysate.



Immunohistochemistry (Formalin/PFA-fixed paraffin-embedded sections)

Formalin-fixed and paraffin-embedded human breast cancer tissue reacted with CSNK2A1 polyclonal antibody (Cat # PAB4015), which was peroxidase-conjugated to the secondary antibody, followed by DAB staining.

This data demonstrates the use of this antibody for immunohistochemistry; clinical relevance has not been evaluated.

Specification

Product Description	Rabbit polyclonal antibody raised against synthetic peptide of CSNK2A1.
Immunogen	A synthetic peptide (conjugated with KLH) corresponding to internal region of human CSNK2A1.
Host	Rabbit
Reactivity	Human, Mouse
Form	Liquid
Purification	Protein G purification

Recommend Usage	ELISA (1:1000) Western Blot (1:100-500) Immunohistochemistry (1:50-100) The optimal working dilution should be determined by the end user.
Storage Buffer	In PBS (0.09% sodium azide)
Storage Instruction	Store at 4°C. For long term storage store at -20°C. Aliquot to avoid repeated freezing and thawing.
Note	This product contains sodium azide: a POISONOUS AND HAZARDOUS SUBSTANCE which should be handled by trained staff only.

Applications

- Western Blot (Tissue lysate)

The CSNK2A1 polyclonal antibody (Cat # PAB4015) is used in Western blot to detect CSNK2A1 in mouse brain tissue lysate.

- Immunohistochemistry (Formalin/PFA-fixed paraffin-embedded sections)

Formalin-fixed and paraffin-embedded human breast cancer tissue reacted with CSNK2A1 polyclonal antibody (Cat # PAB4015), which was peroxidase-conjugated to the secondary antibody, followed by DAB staining.

This data demonstrates the use of this antibody for immunohistochemistry; clinical relevance has not been evaluated.

- Enzyme-linked Immunoabsorbent Assay

Gene Info — CSNK2A1

Entrez GeneID	1457
Protein Accession#	P19138
Gene Name	CSNK2A1
Gene Alias	CK2A1, CKII
Gene Description	casein kinase 2, alpha 1 polypeptide
Omim ID	115440
Gene Ontology	Hyperlink

Gene Summary

Casein kinase II is a serine/threonine protein kinase that phosphorylates acidic proteins such as casein. The kinase exists as a tetramer and is composed of an alpha, an alpha-prime, and two beta subunits. The alpha subunits contain the catalytic activity while the beta subunits undergo autophosphorylation. The protein encoded by this gene represents the alpha subunit. While this gene is found on chromosome 20, a related transcribed pseudogene is found on chromosome 11. Three transcript variants encoding two different proteins have been found for this gene. [provided by RefSeq]

Other Designations

CK2 catalytic subunit alpha|OTTHUMP00000029925|OTTHUMP00000029926|casein kinase II alpha 1 subunit|casein kinase II alpha subunit|protein kinase CK2

Publication Reference

- [CK2 controls multiple protein kinases by phosphorylating a kinase-targeting molecular chaperone, Cdc37.](#)

Miyata Y, Nishida E.

Molecular and Cellular Biology 2004 May; 24(9):4065.

- [Protein kinase CK2: a new view of an old molecular complex.](#)

Filhol O, Martiel JL, Cochet C.

EMBO Reports 2004 Apr; 5(4):351.

Application: IHC, WB, Human, Cancers, Mammalian cells

- [The protein kinase CK2 facilitates repair of chromosomal DNA single-strand breaks.](#)

Loizou JI, El-Khamisy SF, Zlatanou A, Moore DJ, Chan DW, Qin J, Sarno S, Meggio F, Pinna LA, Caldecott KW.

Cell 2004 Apr; 117(1):17.

Pathway

- [Adherens junction](#)
- [Tight junction](#)
- [Wnt signaling pathway](#)

Disease

- [Bipolar Disorder](#)
- [Cardiovascular Diseases](#)

- [Colorectal Neoplasms](#)
- [Diabetes Mellitus](#)
- [Edema](#)
- [Genetic Predisposition to Disease](#)
- [Psychiatric Status Rating Scales](#)
- [Psychotic Disorders](#)
- [Schizophrenia](#)