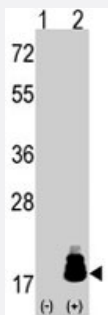


EIF4EBP1 polyclonal antibody

Catalog # PAB3954

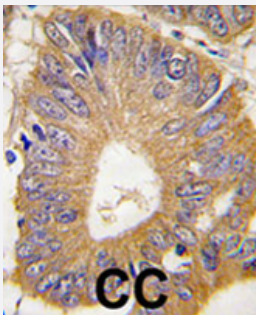
Size 400 uL

Applications



Western Blot (Transfected lysate)

Western blot analysis of EIF4EBP1 (arrow) using rabbit EIF4EBP1 polyclonal antibody (Cat # PAB3954). 293 cell lysates (2 ug/lane) either nontransfected (Lane 1) or transiently transfected with the EIF4EBP1 gene (Lane 2) (Origene Technologies).



Immunohistochemistry (Formalin/PFA-fixed paraffin-embedded sections)

Formalin-fixed and paraffin-embedded human colon carcinoma tissue reacted with EIF4EBP1 polyclonal antibody (Cat # PAB3954), which was peroxidase-conjugated to the secondary antibody, followed by DAB staining. This data demonstrates the use of this antibody for immunohistochemistry; clinical relevance has not been evaluated.

Specification

Product Description	Rabbit polyclonal antibody raised against synthetic peptide of EIF4EBP1.
Immunogen	A synthetic peptide (conjugated with KLH) corresponding to residues surrounding T69 of human EIF4EBP1.
Host	Rabbit
Reactivity	Human
Form	Liquid
Purification	Protein A purification

Recommend Usage	Immunohistochemistry (Formalin/PFA-fixed paraffin-embedded sections) (1:10-50) Western Blot (1:1000) The optimal working dilution should be determined by the end user.
Storage Buffer	In PBS (0.09% sodium azide)
Storage Instruction	Store at 4°C. For long term storage store at -20°C. Aliquot to avoid repeated freezing and thawing.
Note	This product contains sodium azide: a POISONOUS AND HAZARDOUS SUBSTANCE which should be handled by trained staff only.

Applications

- Western Blot (Transfected lysate)

Western blot analysis of EIF4EBP1 (arrow) using rabbit EIF4EBP1 polyclonal antibody (Cat # PAB3954). 293 cell lysates (2 ug/lane) either nontransfected (Lane 1) or transiently transfected with the EIF4EBP1 gene (Lane 2) (Origene Technologies).

- Immunohistochemistry (Formalin/PFA-fixed paraffin-embedded sections)

Formalin-fixed and paraffin-embedded human colon carcinoma tissue reacted with EIF4EBP1 polyclonal antibody (Cat # PAB3954), which was peroxidase-conjugated to the secondary antibody, followed by DAB staining. This data demonstrates the use of this antibody for immunohistochemistry; clinical relevance has not been evaluated.

Gene Info — EIF4EBP1

Entrez GeneID	1978
Protein Accession#	NP_004086
Gene Name	EIF4EBP1
Gene Alias	4E-BP1, 4EBP1, BP-1, MGC4316, PHAS-I
Gene Description	eukaryotic translation initiation factor 4E binding protein 1
Omim ID	602223
Gene Ontology	Hyperlink
Gene Summary	This gene encodes one member of a family of translation repressor proteins. The protein directly interacts with eukaryotic translation initiation factor 4E (eIF4E), which is a limiting component of the multisubunit complex that recruits 40S ribosomal subunits to the 5' end of mRNAs. Interaction of this protein with eIF4E inhibits complex assembly and represses translation. This protein is phosphorylated in response to various signals including UV irradiation and insulin signaling, resulting in its dissociation from eIF4E and activation of mRNA translation. [provided by RefSeq]

Other Designations

eIF4E-binding protein 1|phosphorylated heat- and acid-stable protein regulated by insulin 1

Publication Reference

- [4E-binding protein 1: a key molecular "funnel factor" in human cancer with clinical implications.](#)

Armengol G, Rojo F, Castellvi J, Iglesias C, Cuatrecasas M, Pons B, Baselga J, Ramon y Cajal S.

Cancer Research 2007 Aug; 67(16):7551.

- [PRAS40 is a target for mammalian target of rapamycin complex 1 and is required for signaling downstream of this complex.](#)

Fonseca BD, Smith EM, Lee VH, MacKintosh C, Proud CG.

The Journal of Biological Chemistry 2007 Jun; 282(34):24514.

Pathway

- [Acute myeloid leukemia](#)
- [ErbB signaling pathway](#)
- [Insulin signaling pathway](#)
- [mTOR signaling pathway](#)

Disease

- [Alzheimer disease](#)
- [Genetic Predisposition to Disease](#)
- [Multiple System Atrophy](#)
- [Obesity](#)