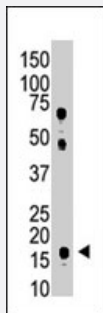


UBE2L6 polyclonal antibody

Catalog # PAB3896

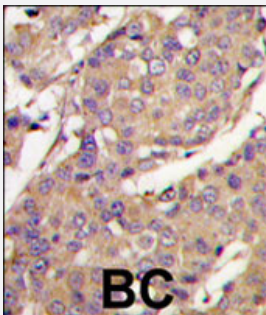
Size 400 uL

Applications



Western Blot (Cell lysate)

The UBE2L6 polyclonal antibody (Cat # PAB3896) is used in Western blot to detect UBE2L6 in HL-60 cell lysate.



Immunohistochemistry (Formalin/PFA-fixed paraffin-embedded sections)

Formalin-fixed and paraffin-embedded human breast carcinoma tissue reacted with UBE2L6 polyclonal antibody (Cat # PAB3896), which was peroxidase-conjugated to the secondary antibody, followed by DAB staining. This data demonstrates the use of this antibody for immunohistochemistry; clinical relevance has not been evaluated.

Specification

Product Description	Rabbit polyclonal antibody raised against synthetic peptide of UBE2L6.
Immunogen	A synthetic peptide (conjugated with KLH) corresponding to C-terminus of human UBE2L6.
Host	Rabbit
Reactivity	Human
Form	Liquid
Purification	Protein G purification

Recommend Usage	Immunohistochemistry (Formalin/PFA-fixed paraffin-embedded sections) (1:10-50) Western Blot (1:1000) The optimal working dilution should be determined by the end user.
Storage Buffer	In PBS (0.09% sodium azide)
Storage Instruction	Store at 4°C. For long term storage store at -20°C. Aliquot to avoid repeated freezing and thawing.
Note	This product contains sodium azide: a POISONOUS AND HAZARDOUS SUBSTANCE which should be handled by trained staff only.

Applications

- Western Blot (Cell lysate)

The UBE2L6 polyclonal antibody (Cat # PAB3896) is used in Western blot to detect UBE2L6 in HL-60 cell lysate.

- Immunohistochemistry (Formalin/PFA-fixed paraffin-embedded sections)

Formalin-fixed and paraffin-embedded human breast carcinoma tissue reacted with UBE2L6 polyclonal antibody (Cat # PAB3896), which was peroxidase-conjugated to the secondary antibody, followed by DAB staining. This data demonstrates the use of this antibody for immunohistochemistry; clinical relevance has not been evaluated.

Gene Info — UBE2L6

Entrez GeneID	9246
Protein Accession#	NP_004214;O14933
Gene Name	UBE2L6
Gene Alias	MGC40331, RIG-B, UBCH8
Gene Description	ubiquitin-conjugating enzyme E2L 6
Omim ID	603890
Gene Ontology	Hyperlink
Gene Summary	The modification of proteins with ubiquitin is an important cellular mechanism for targeting abnormal or short-lived proteins for degradation. Ubiquitination involves at least three classes of enzymes: ubiquitin-activating enzymes (E1s), ubiquitin-conjugating enzymes (E2s) and ubiquitin-protein ligases (E3s). This gene encodes a member of the E2 ubiquitin-conjugating enzyme family. This enzyme is highly similar in primary structure to the enzyme encoded by UBE2L3 gene. Two alternatively spliced transcript variants encoding distinct isoforms have been found for this gene. [provided by RefSeq]

Other Designations

retinoic acid induced gene B protein|ubiquitin carrier protein|ubiquitin-protein ligase

Publication Reference

- [Mechanism for ubiquitylation of the leukemia fusion proteins AML1-ETO and PML-RARalpha.](#)

Kramer OH, Muller S, Buchwald M, Reichardt S, Heinzel T.

FASEB Journal 2007 Dec; 22(5):1369.

Pathway

- [Ubiquitin mediated proteolysis](#)