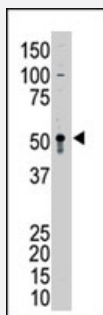


GDF2 polyclonal antibody

Catalog # PAB3885

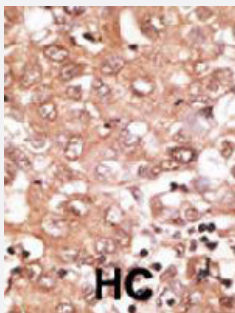
Size 400 uL

Applications



Western Blot (Tissue lysate)

The GDF2 polyclonal antibody (Cat # PAB3885) is used in Western blot to detect GDF2 in mouse liver tissue lysate.



Immunohistochemistry (Formalin/PFA-fixed paraffin-embedded sections)

Formalin-fixed and paraffin-embedded human hepatocellular carcinoma tissue reacted with GDF2 polyclonal antibody (Cat # PAB3885), which was peroxidase-conjugated to the secondary antibody, followed by DAB staining. This data demonstrates the use of this antibody for immunohistochemistry; clinical relevance has not been evaluated. BC = breast carcinoma; HC = hepatocarcinoma.

Specification

Product Description	Rabbit polyclonal antibody raised against synthetic peptide of GDF2.
Immunogen	A synthetic peptide (conjugated with KLH) corresponding to N-terminus of human GDF2.
Host	Rabbit
Reactivity	Human, Mouse
Form	Liquid
Purification	Protein G purification

Recommend Usage	Immunohistochemistry (Formalin/PFA-fixed paraffin-embedded sections) (1:50-100) Western Blot (1:1000) The optimal working dilution should be determined by the end user.
Storage Buffer	In PBS (0.09% sodium azide)
Storage Instruction	Store at 4°C. For long term storage store at -20°C. Aliquot to avoid repeated freezing and thawing.
Note	This product contains sodium azide: a POISONOUS AND HAZARDOUS SUBSTANCE which should be handled by trained staff only.

Applications

- Western Blot (Tissue lysate)

The GDF2 polyclonal antibody (Cat # PAB3885) is used in Western blot to detect GDF2 in mouse liver tissue lysate.

- Immunohistochemistry (Formalin/PFA-fixed paraffin-embedded sections)

Formalin-fixed and paraffin-embedded human hepatocellular carcinoma tissue reacted with GDF2 polyclonal antibody (Cat # PAB3885), which was peroxidase-conjugated to the secondary antibody, followed by DAB staining. This data demonstrates the use of this antibody for immunohistochemistry; clinical relevance has not been evaluated. BC = breast carcinoma; HC = hepatocarcinoma.

Gene Info — GDF2

Entrez GeneID	2658
Protein Accession#	Q9UK05
Gene Name	GDF2
Gene Alias	BMP-9, BMP9
Gene Description	growth differentiation factor 2
Omim ID	605120
Gene Ontology	Hyperlink
Gene Summary	The protein encoded by this gene is a member of the bone morphogenetic protein (BMP) family and the TGF-beta superfamily. This group of proteins is characterized by a polybasic proteolytic processing site which is cleaved to produce a mature protein containing seven conserved cysteine residues. The members of this family are regulators of cell growth and differentiation in both embryonic and adult tissues. Studies in rodents suggest that this protein plays a role in the adult liver and in differentiation of cholinergic central nervous system neurons. [provided by RefSeq]

Other Designations

OTTHUMP00000019538|bone morphogenetic protein 9

Publication Reference

- [Targeting secreted cytokine BMP9 gates the attenuation of hepatic fibrosis.](#)

Li P, Li Y, Zhu L, Yang Z, He J, Wang L, Shang Q, Pan H, Wang H, Ma X, Li B, Fan X, Ge S, Jia R, Zhang H.

Biochimica et Biophysica Acta 2017 Dec; 1864(3):709.

Application: ELISA, Human, Human serum from patients with hepatic fibrosis

- [BMP-2 and BMP-9 promotes chondrogenic differentiation of human multipotential mesenchymal cells and overcomes the inhibitory effect of IL-1.](#)

Majumdar MK, Wang E, Morris EA.

Journal of Cellular Physiology 2001 Dec; 189(3):275.

- [Induction and maintenance of the neuronal cholinergic phenotype in the central nervous system by BMP-9.](#)

Lopez-Coviella I, Berse B, Krauss R, Thies RS, Blusztajn JK.

Science 2000 Jul; 289(5477):313.

Application: Treated, Recombinant protein

- [Bone morphogenetic protein-9. An autocrine/paracrine cytokine in the liver.](#)

Miller AF, Harvey SA, Thies RS, Olson MS.

The Journal of Biological Chemistry 2000 Jun; 275(24):17937.

Disease

- [Alzheimer Disease](#)
- [Genetic Predisposition to Disease](#)
- [Liver Cirrhosis](#)
- [Mental Disorders](#)
- [Obesity](#)
- [Ovarian Failure](#)
- [Polycystic Ovary Syndrome](#)

- [Puberty](#)
- [Thrombophilia](#)
- [Tobacco Use Disorder](#)