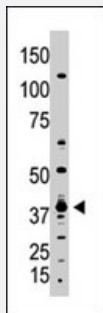


GDF1 polyclonal antibody

Catalog # PAB3884

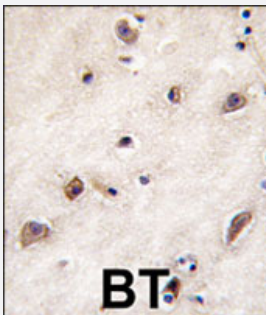
Size 400 uL

Applications



Western Blot (Cell lysate)

The GDF1 polyclonal antibody (Cat # PAB3884) is used in Western blot to detect GDF1 in A-375 cell lysate.



Immunohistochemistry (Formalin/PFA-fixed paraffin-embedded sections)

Formalin-fixed and paraffin-embedded human brain tissue reacted with GDF1 polyclonal antibody (Cat # PAB3884), which was peroxidase-conjugated to the secondary antibody, followed by DAB staining. This data demonstrates the use of this antibody for immunohistochemistry; clinical relevance has not been evaluated.

Specification

Product Description	Rabbit polyclonal antibody raised against synthetic peptide of GDF1.
Immunogen	A synthetic peptide (conjugated with KLH) corresponding to N-terminus of human GDF1.
Host	Rabbit
Reactivity	Human
Form	Liquid
Purification	Protein G purification

Recommend Usage	Immunohistochemistry (Formalin/PFA-fixed paraffin-embedded sections) (1:10-50) Western Blot (1:1000) The optimal working dilution should be determined by the end user.
Storage Buffer	In PBS (0.09% sodium azide)
Storage Instruction	Store at 4°C. For long term storage store at -20°C. Aliquot to avoid repeated freezing and thawing.
Note	This product contains sodium azide: a POISONOUS AND HAZARDOUS SUBSTANCE which should be handled by trained staff only.

Applications

- Western Blot (Cell lysate)

The GDF1 polyclonal antibody (Cat # PAB3884) is used in Western blot to detect GDF1 in A-375 cell lysate.

- Immunohistochemistry (Formalin/PFA-fixed paraffin-embedded sections)

Formalin-fixed and paraffin-embedded human brain tissue reacted with GDF1 polyclonal antibody (Cat # PAB3884), which was peroxidase-conjugated to the secondary antibody, followed by DAB staining. This data demonstrates the use of this antibody for immunohistochemistry; clinical relevance has not been evaluated.

Gene Info — GDF1

Entrez GeneID	2657
Protein Accession#	GDF1_HUMAN
Gene Name	GDF1
Gene Alias	-
Gene Description	growth differentiation factor 1
Omim ID	187500 217095 602880
Gene Ontology	Hyperlink
Gene Summary	This gene encodes a member of the bone morphogenetic protein (BMP) family and the TGF-beta superfamily. This group of proteins is characterized by a polybasic proteolytic processing site that is cleaved to produce a mature protein containing seven conserved cysteine residues. The members of this family are regulators of cell growth and differentiation in both embryonic and adult tissues. Studies in rodents suggest that this protein is involved in the establishment of left-right asymmetry in early embryogenesis and in neural development in later embryogenesis. This protein is transcribed from a bicistronic mRNA that also encodes the longevity assurance gene. [provided by RefSeq]

Other Designations

-

Publication Reference

- [The family of bone morphogenetic proteins.](#)

Ducy P, Karsenty G.

Kidney International 2000 Jun; 57(6):2207.

- [Homologs of the yeast longevity gene LAG1 in Caenorhabditis elegans and human.](#)

Jiang JC, Kirchman PA, Zagulski M, Hunt J, Jazwinski SM.

Genome Research 1998 Dec; 8(12):1259.

- [Chromosomal distribution of 320 genes from a brain cDNA library.](#)

Polymeropoulos MH, Xiao H, Sikela JM, Adams M, Venter JC, Merrill CR.

Nature Genetics 1993 Aug; 4(4):381.

Disease

- [Cleft Lip](#)
- [Cleft Palate](#)
- [Genetic Predisposition to Disease](#)
- [Obesity](#)
- [Ovarian Failure](#)
- [Polycystic Ovary Syndrome](#)
- [Puberty](#)
- [Thrombophilia](#)
- [Tobacco Use Disorder](#)