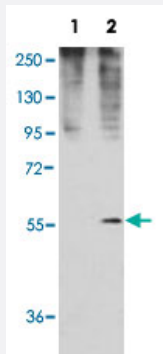


# GDF11 polyclonal antibody

Catalog # PAB3882

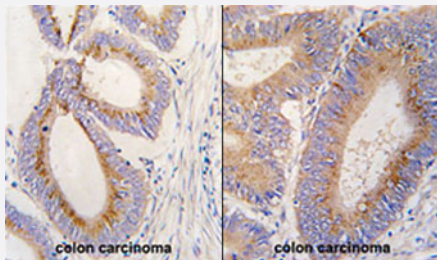
Size 400 uL

## Applications



### Western Blot (Transfected lysate)

Western blot analysis of GDF11 (arrow) using rabbit GDF11 polyclonal antibody (Cat # PAB3882). 293 cell lysates (2 ug/lane) either nontransfected (Lane 1) or transiently transfected with the GDF11 gene (Lane 2) (Origene Technologies).



### Immunohistochemistry (Formalin/PFA-fixed paraffin-embedded sections)

Formalin-fixed and paraffin-embedded human colon carcinoma tissue reacted with GDF11 polyclonal antibody (Cat # PAB3882), which was peroxidase-conjugated to the secondary antibody, followed by DAB staining. This data demonstrates the use of this antibody for immunohistochemistry; clinical relevance has not been evaluated.

## Specification

<b>Product Description</b>	Rabbit polyclonal antibody raised against synthetic peptide of GDF11.
<b>Immunogen</b>	A synthetic peptide (conjugated with KLH) corresponding to N-terminus of human GDF11.
<b>Host</b>	Rabbit
<b>Reactivity</b>	Human
<b>Form</b>	Liquid
<b>Purification</b>	Protein G purification

<b>Recommend Usage</b>	Immunohistochemistry (Formalin/PFA-fixed paraffin-embedded sections) (1:10-50) Western Blot (1:1000) The optimal working dilution should be determined by the end user.
<b>Storage Buffer</b>	In PBS (0.09% sodium azide)
<b>Storage Instruction</b>	Store at 4°C. For long term storage store at -20°C. Aliquot to avoid repeated freezing and thawing.
<b>Note</b>	This product contains sodium azide: a POISONOUS AND HAZARDOUS SUBSTANCE which should be handled by trained staff only.

## Applications

- Western Blot (Transfected lysate)

Western blot analysis of GDF11 (arrow) using rabbit GDF11 polyclonal antibody (Cat # PAB3882). 293 cell lysates (2 ug/lane) either nontransfected (Lane 1) or transiently transfected with the GDF11 gene (Lane 2) (Origene Technologies).

- Immunohistochemistry (Formalin/PFA-fixed paraffin-embedded sections)

Formalin-fixed and paraffin-embedded human colon carcinoma tissue reacted with GDF11 polyclonal antibody (Cat # PAB3882), which was peroxidase-conjugated to the secondary antibody, followed by DAB staining. This data demonstrates the use of this antibody for immunohistochemistry; clinical relevance has not been evaluated.

## Gene Info — GDF11

<b>Entrez GeneID</b>	<a href="#">10220</a>
<b>Protein Accession#</b>	<a href="#">NP_005802;O95390</a>
<b>Gene Name</b>	GDF11
<b>Gene Alias</b>	BMP-11, BMP11
<b>Gene Description</b>	growth differentiation factor 11
<b>Omim ID</b>	<a href="#">603936</a>
<b>Gene Ontology</b>	<a href="#">Hyperlink</a>
<b>Gene Summary</b>	The protein encoded by this gene is a member of the bone morphogenetic protein (BMP) family and the TGF-beta superfamily. This group of proteins is characterized by a polybasic proteolytic processing site which is cleaved to produce a mature protein containing seven conserved cysteine residues. The members of this family are regulators of cell growth and differentiation in both embryonic and adult tissues. Studies in mice and Xenopus suggest that this protein is involved in mesodermal formation and neurogenesis during embryonic development. [provided by RefSeq]

## Other Designations

bone morphogenetic protein 11

## Publication Reference

- [Myostatin and the control of skeletal muscle mass.](#)

Lee SJ, McPherron AC.

Current Opinion in Genetics & Development 1999 Oct; 9(5):604.

Application: IHC, WB-Ti, Human, Mouse, Skeletal muscles

- [Regulation of anterior/posterior patterning of the axial skeleton by growth/differentiation factor 11.](#)

McPherron AC, Lawler AM, Lee SJ.

Nature Genetics 1999 Jul; 22(3):260.

- [A novel BMP expressed in developing mouse limb, spinal cord, and tail bud is a potent mesoderm inducer in \*Xenopus\* embryos.](#)

Gamer LW, Wolfman NM, Celeste AJ, Hattersley G, Hewick R, Rosen V.

Developmental Biology 1999 Apr; 208(1):222.

## Disease

- [Genetic Predisposition to Disease](#)

- [Obesity](#)

- [Ovarian Failure](#)

- [Polycystic Ovary Syndrome](#)

- [Puberty](#)

- [Thrombophilia](#)

- [Tobacco Use Disorder](#)