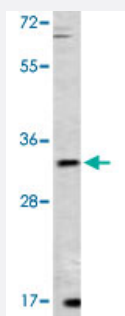


ZFP42 polyclonal antibody

Catalog # PAB3878

Size 400 uL

Applications



Western Blot (Tissue lysate)

Western blot analysis of mouse lung tissue lysate (35 ug/lane) with ZFP42 polyclonal antibody (Cat # PAB3878).

Specification

Product Description	Rabbit polyclonal antibody raised against synthetic peptide of ZFP42.
Immunogen	A synthetic peptide (conjugated with KLH) corresponding to N-terminus of human ZFP42.
Host	Rabbit
Reactivity	Human, Mouse
Form	Liquid
Purification	Protein G purification
Recommend Usage	Western Blot (1:1000) The optimal working dilution should be determined by the end user.
Storage Buffer	In PBS (0.09% sodium azide)
Storage Instruction	Store at 4°C. For long term storage store at -20°C. Aliquot to avoid repeated freezing and thawing.
Note	This product contains sodium azide: a POISONOUS AND HAZARDOUS SUBSTANCE which should be handled by trained staff only.

Applications

- Western Blot (Tissue lysate)

Western blot analysis of mouse lung tissue lysate (35 ug/lane) with ZFP42 polyclonal antibody (Cat # PAB3878).

Gene Info — ZFP42

Entrez GeneID [132625](#)

Protein Accession# [Q8WXE2](#)

Gene Name ZFP42

Gene Alias REX1, ZNF754

Gene Description zinc finger protein 42 homolog (mouse)

Gene Ontology [Hyperlink](#)

Other Designations REX1 transcription factor|zinc finger protein 42

Publication Reference

- [Progesterone-dependent deoxyribonucleic acid looping between RUSH/SMARCA3 and Egr-1 mediates repression by c-Rel.](#)

Hewetson A, Chilton BS.

Molecular Endocrinology 2008 Jan; 22(4):813.