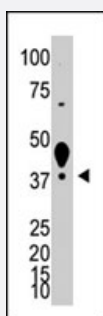


LYVE1 polyclonal antibody

Catalog # PAB3847

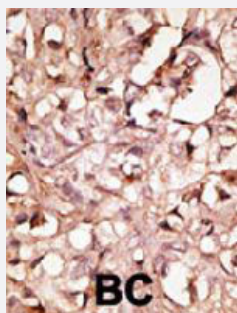
Size 400 uL

Applications



Western Blot (Tissue lysate)

The LYVE1 polyclonal antibody (Cat # PAB3847) is used in Western blot to detect XLKD1 in mouse liver tissue lysate



Immunohistochemistry (Formalin/PFA-fixed paraffin-embedded sections)

Formalin-fixed and paraffin-embedded human cancer tissue reacted with LYVE1 polyclonal antibody (Cat # PAB3847), which was peroxidase-conjugated to the secondary antibody, followed by DAB staining. This data demonstrates the use of this antibody for immunohistochemistry; clinical relevance has not been evaluated. BC = breast carcinoma; HC = hepatocarcinoma

Specification

Product Description	Rabbit polyclonal antibody raised against synthetic peptide of LYVE1.
Immunogen	A synthetic peptide (conjugated with KLH) corresponding to N-terminus of human LYVE1.
Host	Rabbit
Reactivity	Human, Mouse
Form	Liquid
Purification	Protein G purification

Recommend Usage	Immunohistochemistry (Formalin/PFA-fixed paraffin-embedded sections) (1:50-100) Western Blot (1:1000) The optimal working dilution should be determined by the end user.
Storage Buffer	In PBS (0.09% sodium azide)
Storage Instruction	Store at 4°C. For long term storage store at -20°C. Aliquot to avoid repeated freezing and thawing.
Note	This product contains sodium azide: a POISONOUS AND HAZARDOUS SUBSTANCE which should be handled by trained staff only.

Applications

- Western Blot (Tissue lysate)

The LYVE1 polyclonal antibody (Cat # PAB3847) is used in Western blot to detect XLKD1 in mouse liver tissue lysate

- Immunohistochemistry (Formalin/PFA-fixed paraffin-embedded sections)

Formalin-fixed and paraffin-embedded human cancer tissue reacted with LYVE1 polyclonal antibody (Cat # PAB3847), which was peroxidase-conjugated to the secondary antibody, followed by DAB staining. This data demonstrates the use of this antibody for immunohistochemistry; clinical relevance has not been evaluated. BC = breast carcinoma; HC = hepatocarcinoma

Gene Info — LYVE1

Entrez GeneID	10894
Protein Accession#	NP_006682
Gene Name	LYVE1
Gene Alias	CRSBP-1, HAR, LYVE-1, XLKD1
Gene Description	lymphatic vessel endothelial hyaluronan receptor 1
Omim ID	605702
Gene Ontology	Hyperlink
Gene Summary	This gene encodes a type I integral membrane glycoprotein. The encoded protein acts as a receptor and binds to both soluble and immobilized hyaluronan. This protein may function in lymphatic hyaluronan transport and have a role in tumor metastasis. [provided by RefSeq]
Other Designations	cell surface retention sequence binding protein-1 extracellular link domain containing 1 extracellular link domain-containing 1 hyaluronic acid receptor

Publication Reference

- [The lymphatics revisited: new perspectives from the hyaluronan receptor LYVE-1.](#)

Jackson DG.

Trends in Cardiovascular Medicine 2003 Jan; 13(1):1.

Application: Flow Cyt, IHC, Human, Breast carcinoma, Oropharyngeal carcinoma

- [Lymphangiogenesis quantification using quantitative PCR and breast cancer as a model.](#)

Cunnick GH, Jiang WG, Gomez KF, Mansel RE.

Biochemical and Biophysical Research Communications 2001 Nov; 288(4):1043.

Disease

- [Lymphedema](#)