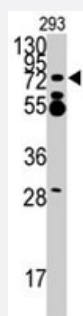


ZNF219 polyclonal antibody

Catalog # PAB3822

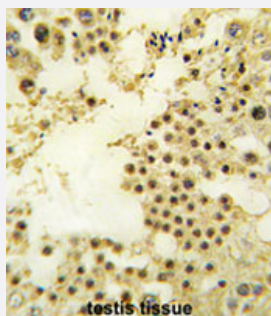
Size 400 uL

Applications



Western Blot (Cell lysate)

Western blot analysis of ZNF219 polyclonal antibody (Cat # PAB3822) in 293 cell line lysates (35 ug/lane). ZNF219 (arrow) was detected using the purified polyclonal antibody (1:1000 dilution).



Immunohistochemistry (Formalin/PFA-fixed paraffin-embedded sections)

Formalin-fixed and paraffin-embedded human testis reacted with ZNF219 polyclonal antibody (Cat # PAB3822), which was peroxidase-conjugated to the secondary antibody, followed by AEC staining.

This data demonstrates the use of this antibody for immunohistochemistry; clinical relevance has not been evaluated.

Specification

Product Description	Rabbit polyclonal antibody raised against synthetic peptide of ZNF219.
Immunogen	A synthetic peptide (conjugated with KLH) corresponding to N-terminus of human ZNF219.
Host	Rabbit
Reactivity	Human
Form	Liquid
Purification	Ammonium sulfate precipitation

Recommend Usage	Immunohistochemistry (Formalin/PFA-fixed paraffin-embedded sections) (1:10-50) Western Blot (1:1000) The optimal working dilution should be determined by the end user.
Storage Buffer	In PBS (0.09% sodium azide)
Storage Instruction	Store at 4°C. For long term storage store at -20°C. Aliquot to avoid repeated freezing and thawing.
Note	This product contains sodium azide: a POISONOUS AND HAZARDOUS SUBSTANCE which should be handled by trained staff only.

Applications

- Western Blot (Cell lysate)

Western blot analysis of ZNF219 polyclonal antibody (Cat # PAB3822) in 293 cell line lysates (35 ug/lane). ZNF219 (arrow) was detected using the purified polyclonal antibody (1:1000 dilution).

- Immunohistochemistry (Formalin/PFA-fixed paraffin-embedded sections)

Formalin-fixed and paraffin-embedded human testis reacted with ZNF219 polyclonal antibody (Cat # PAB3822), which was peroxidase-conjugated to the secondary antibody, followed by AEC staining.

This data demonstrates the use of this antibody for immunohistochemistry; clinical relevance has not been evaluated.

Gene Info — ZNF219

Entrez GeneID	51222
Protein Accession#	NP_001095142;Q9P2Y4
Gene Name	ZNF219
Gene Alias	ZFP219
Gene Description	zinc finger protein 219
Omim ID	605036
Gene Ontology	Hyperlink
Other Designations	-

Publication Reference

- [Global, in vivo, and site-specific phosphorylation dynamics in signaling networks.](#)

Olsen JV, Blagoev B, Gnäd F, Macek B, Kumar C, Mortensen P, Mann M.

Cell 2006 Nov; 127(3):635.

- [The negative regulator of Gli, Suppressor of fused \(Sufu\), interacts with SAP18, Galectin3 and other nuclear proteins.](#)

Paces-Fessy M, Boucher D, Petit E, Pauté-Briand S, Blanchet-Tournier MF.

The Biochemical Journal 2004 Mar; 378(Pt 2):353.

- [Identification of the DNA binding specificity of the human ZNF219 protein and its function as a transcriptional repressor.](#)

Sakai T, Hino K, Wada S, Maeda H.

DNA Research 2003 Aug; 10(4):155.